



WWW.VUEASTON.COM

NO.88 NATIONAL ASSEMBLY STREET, SANGKAT TONLE BASSAC,
KHAN CHAMKARMORN, PHNOM PENH, CAMBODIA

• *INSIDE THE AMAZING* •

CREATE YOUR OWN LIFE STYLE



ELEGANT BY NATURE

Signature living in the heart of
Phnom Penh



Artist's Impression

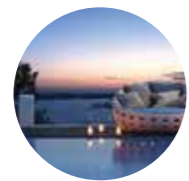
THE NEW BLUE EDGE

Where the city embraces its waterfront heritage and its connections with burgeoning precincts



A MAGNIFICENT LANDMARK

A sculptural new landmark that evokes both a golden epoch of the past and an exhilarating new chapter



VIEW



VARY



VALUE



THE JEWEL OF THE CROWN

The Jewel Of The Crown, Vue Aston Of The Peninsula
Mekong River, The Flowing Ribbon Connects Phnom Penh With The World
Chbar Ampov, At The Very Heart Of The Great Kingdom's Capital,
Is Destined To Be Prospective And Flourishing



PRIME LOCATIONS & CONVENIENT TRANSPORTATION

Vue Aston is located in Phum Kaoh Norea, Chbar Ampov district, where the junction of Bassac River and Mekong River takes place. It features high accessibility to the water, land and air transportation hubs. It is only 15 minutes' drive to both the new international airport and the Phnom Penh Port. After the plan of a new bridge linking the Koh Pich and Koh Norea being announced by the government, the residents of Vue Aston will be able to reach the center of Phnom Penh within minutes.



A FOOTSTEP AWAY FROM THE SILVER BEACH

Vue Aston not only situated at the heart of the riverside Noreay Island City (the Silver Beach), but it is also adjacent to the other two most promising growing cores of Phnom Penh: the Koh Pich and the Peng Huoth Elite Communities, both high-end commercial and residential centers for the very elites.





A MASTERPIECE BY HKS

Vue Aston adopts specially designed 5D garden system which includes the riverside green embankment, the terrace garden, the hanging gardens, the rooftop garden, and the infinity pool. These gardens are all in different heights that will highly expand your living space. When you take a stroll in the roof garden overlooking the waterscape or just sit down for a drink, you may feel like being in a resort surrounded by the great mother nature, not just a stylish apartment in the modern city.





WHERE ELEGANCE COMES NATURALLY

Experience the best water view from each suite in Vue Aston. Live alongside the gorgeous blue vistas of the confluence that River Tonle Bassac meets River Mekong, while overlooking the miraculous skyline of the city. The ever looking blue vistas, sumptuous suite finishes, and indulgent building amenities are what make Vue Aston Phnom Penh' s most desirable new waterfront address.



Artist's Impression



5D GARDEN SYSTEM: ESCAPE FROM THE CONCRETE JUNGLE

Vue Aston adopts specially designed 5D garden system which includes the riverside green embankment, the terrace garden, the hanging gardens, the rooftop garden, and the infinity pool. These gardens are all in different heights that will highly expand your living space. When you take a stroll in the roof garden overlooking the waterscape or just sit down for a drink, you may feel like being in a resort surrounded by the great mother nature, not just a stylish apartment in the modern city.

*UNPARALLELED OUTDOOR LIVING EXPERIENCE
AND PRIVATE WATER GARDEN*

The spacious, and open-concept waterfront garden and lobby provide a modern and elegantly chic place to gather, get comfortable and feel relaxed. Stunning views of the city and gorgeous blue vistas of expansive windows add an overall sense of grandeur and depth to your elegant space.



Artist's Impression

LIFE IS SITUATIONAL RECONSTRUCTION

The scenes on the way home are well designed to make the experience of going home a pleasure. On the way home, you will witness the pleasing natural landscape, feel the beauty of Khmer-style design, experience the smiling service of the white uniform doorman, and pass the magnificent lobby whose floor-to-ceiling glass windows reflect dreamlike light and shadow from the water surface.





Artist's Impression

*5 STAR HOTEL DOUBLE LOBBIES
SEPARATED HOTEL AND APARTMENT ROUTES*



- | | |
|---|------------------------------------|
| 1 Hotel Lobby | 14 Elevator Hall |
| 2 Western Restaurant /Coffee & Wine Bar | 15 Convenience Store |
| 3 Jewelry Store | 16 Reception |
| 4 Rest Area | 17 Dessert Area |
| 5 Access to Hotel, Bar, Banquet Hall | 18 Dessert Kitchen |
| 6 Access to Apartment | 19 Luggage Room |
| 7 Access to Office | 20 Baby Care Room |
| 8 Office Foyer | 21 Ladies Toilet |
| 9 Chinese Restaurant Foyer | 22 Cleaning Equipment Storage Area |
| 10 Chinese Kitchen | 23 Accessible Toilet |
| 11 Chinese Restaurant | 24 Gentlemen Toilet |
| 12 Wedding Terrace | 25 Western Kitchen |
| 13 Apartment Lobby | 26 Ship Club |



FULL SERVICE MEETS ALL YOUR NEEDS



In addition to the luxurious hardware, Vue Aston also provides you the attentive and thoughtful service including the double reception, 24-hr butler&food delivery service, business reception, house caring and more.



SKY BAR

A remarkable gathering place realizes your privileged living.





Artist's Impression

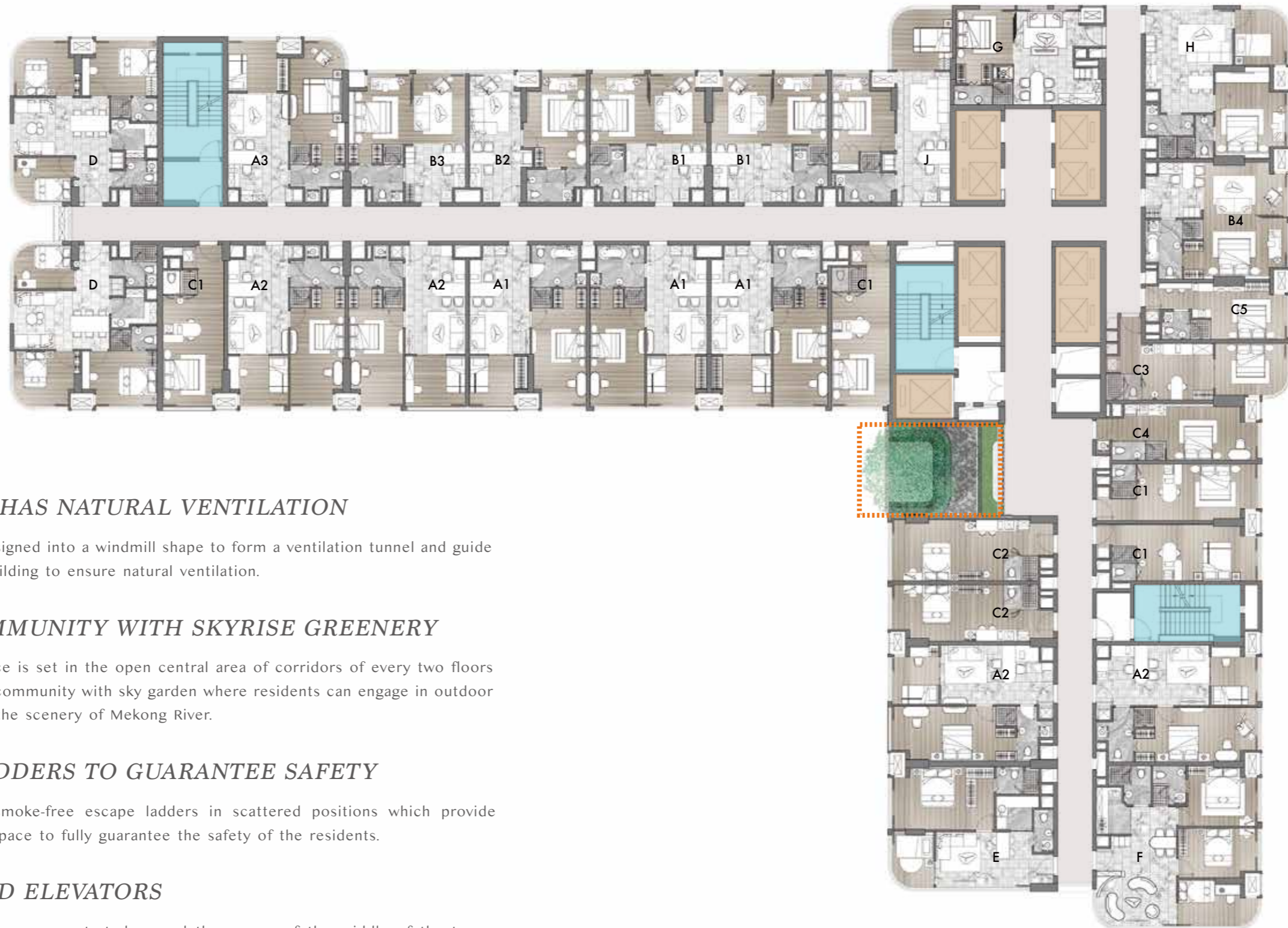
INFINITY EDGE POOL

Indoor and outdoor amenities boasting a fully-equipped fitness studio, spacious, and glimmering outdoor pool all over looking the beautiful view

SUPREME SUPPORTING FACILITIES



- 1 Infinity Pool
- 2 Children's Play Area
- 3 Skybar
- 4 Locker Room
- 5 Sauna
- 6 SPA
- 7 Gym
- 8 V-Club



CORRIDOR HAS NATURAL VENTILATION

The corridor is designed into a windmill shape to form a ventilation tunnel and guide airflow into the building to ensure natural ventilation.

MICRO-COMMUNITY WITH SKYRISE GREENERY

A large public space is set in the open central area of corridors of every two floors to create a micro-community with sky garden where residents can engage in outdoor activities and see the scenery of Mekong River.

ESCAPE LADDERS TO GUARANTEE SAFETY

There are three smoke-free escape ladders in scattered positions which provide sufficient escape space to fully guarantee the safety of the residents.

HIGH-SPEED ELEVATORS

There are 9 elevators concentrated around the corner of the middle of the tower. Among them are 8 high-speed passenger elevators and 1 freight elevator which are all controlled by artificial intelligence systems to improve their efficiency.

Corridor Elevator Escape Ladder Standard Floor Garden

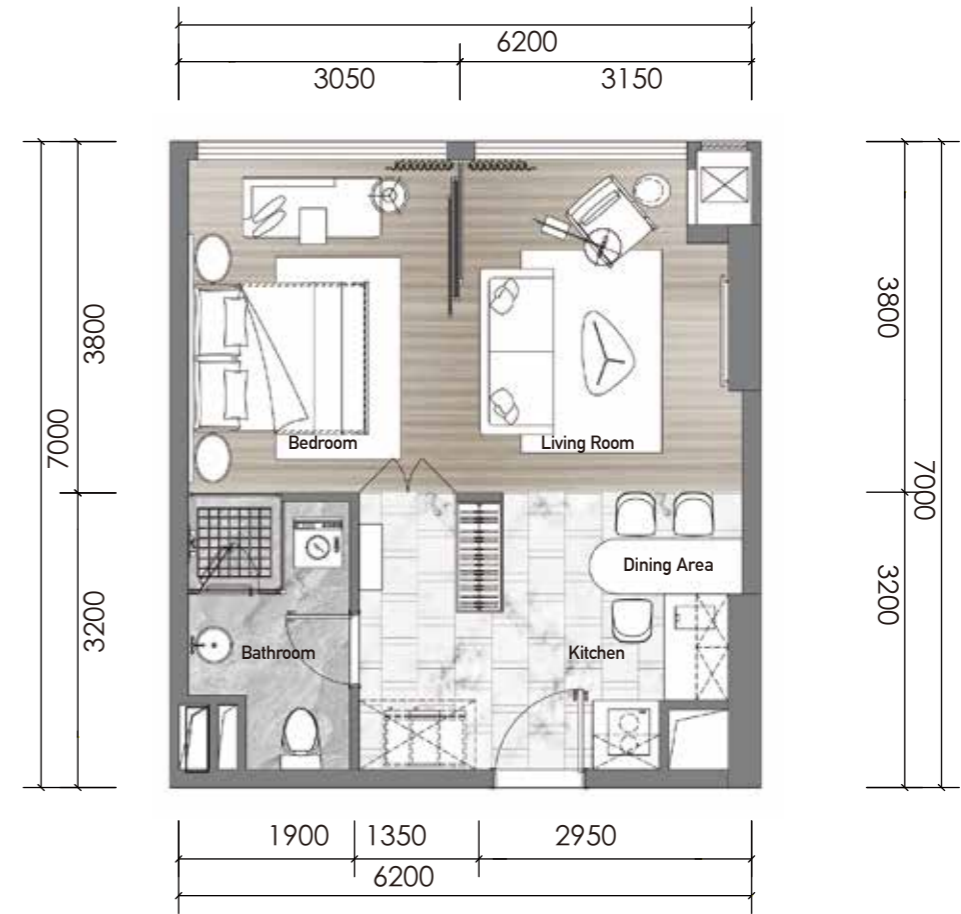


Type. A1 Z10\Z12\Z12A
2 Bedroom + 1 Living Room + 1 Kitchen + 1 Bathroom

Gross:74.30m² Net:53.94m²



VUE SUITE COLLECTION

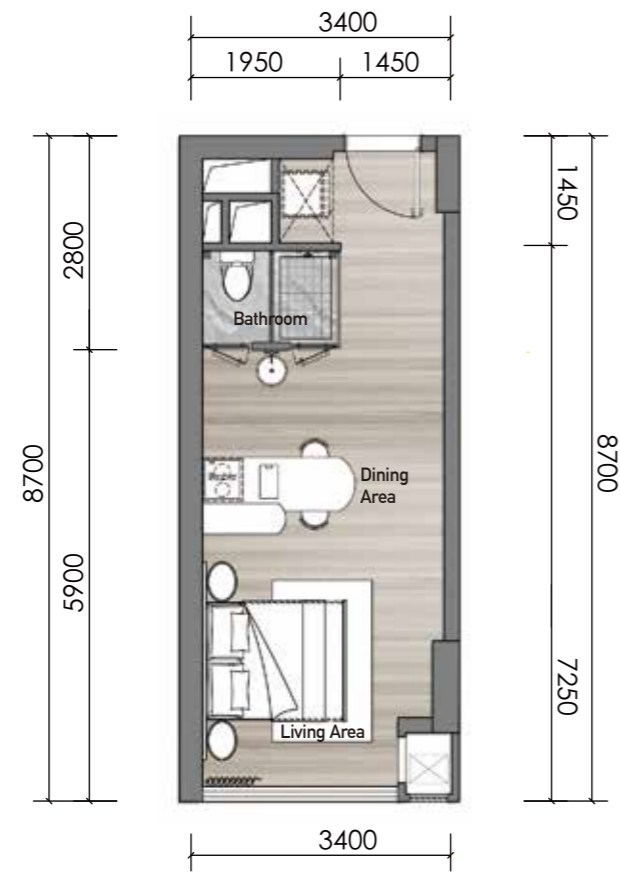


Type. B1 Z9\Z11
1 Bedroom + 1 Living Room + 1 Kitchen + 1 Bathroom

Gross:59.78m² Min Net:43.40m²



VUE SUITE COLLECTION



Type **C1** **Z2A**
1 Bedroom + 1 Bathroom

Gross:40.74m² Net:29.58m²



VUE SUITE COLLECTION

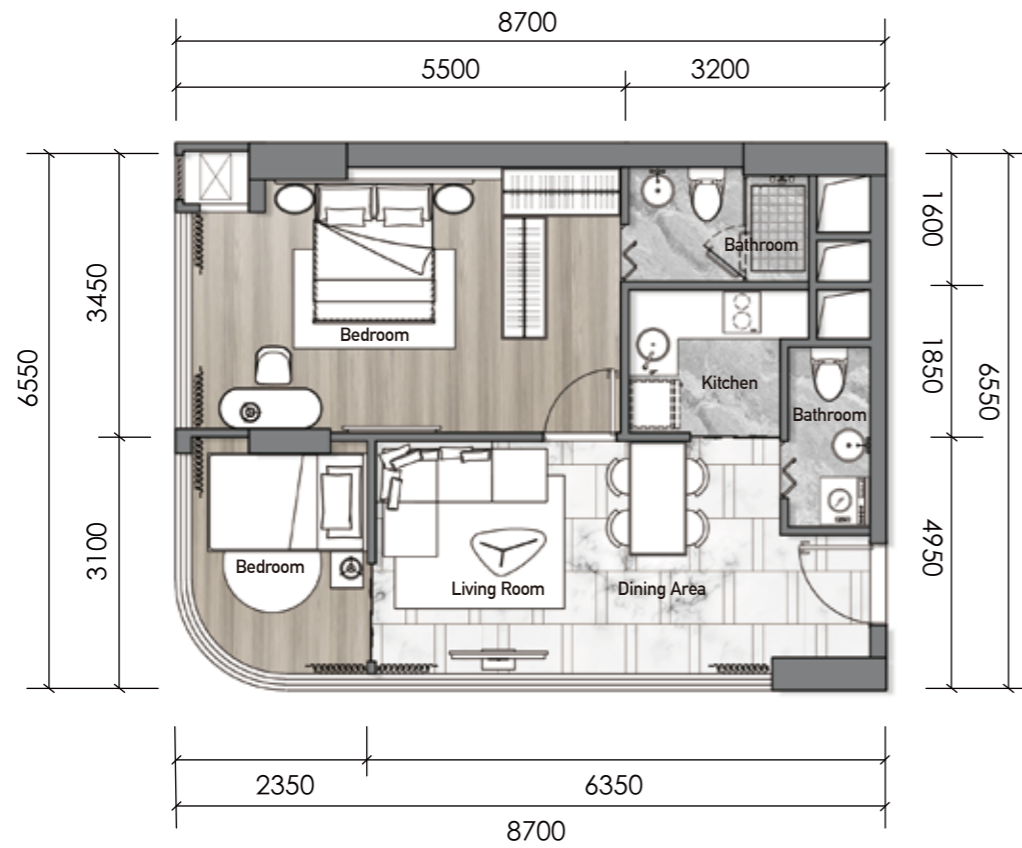


Type **D** **Z1\Z2**
3 Bedroom + 1 Living Room + 1 Kitchen + 2 Bathroom

Gross:91.42m² Net:66.37m²



VUE SUITE COLLECTION

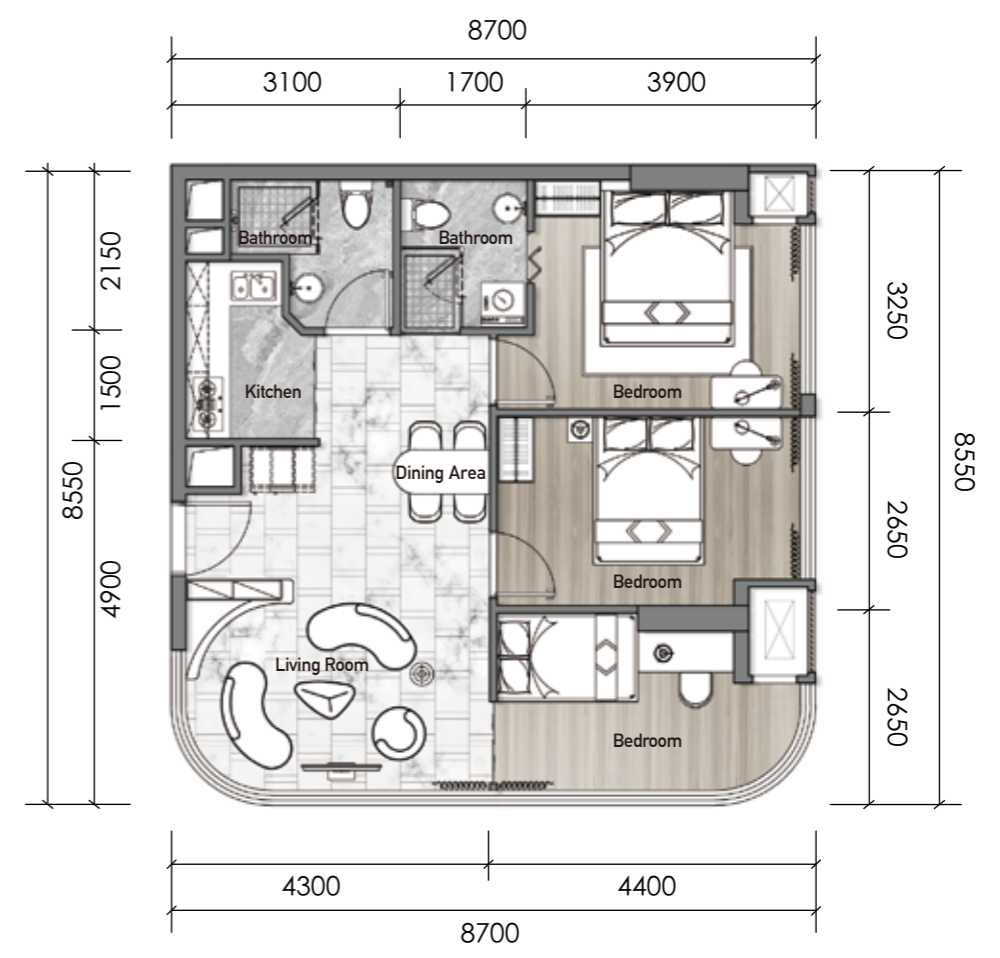


Type. **E** ^{W2}
 2 Bedroom + 1 Living Room + 1 Kitchen + 2 Bathroom

Gross: 78.07m² Net: 56.68m²



VUE SUITE COLLECTION



Type. **F** ^{W1}
 3 Bedroom + 1 Living Room + 1 Kitchen + 2 Bathroom

Gross: 101.61m² Net: 73.77m²



VUE SUITE COLLECTION



Artist's Impression

INSPIRING WATERFRONT AND CITY VIEWS

Phnom Penh is growing and extending the historic street grid into emerging district and valuable water resource. Vue Aston's overlooking blue vistas, sumptuous suite finishes, and indulgent building amenities are what make it Phnom Penh's most desirable new waterfront address.



YOUR FORTUNE BEGINS HERE