



MORGAN  
EnMaison  
摩根·天御

# 世界湾区作品 首都CLD地标豪宅

A WORLD-CLASS PROJECT SET TO BECOME  
A LUXURY LANDMARK OF THE CAPITAL'S RIVERSIDE.

LOCATED IN THE CENTER OF THE CAPITAL

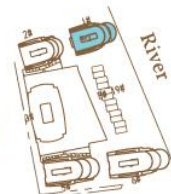
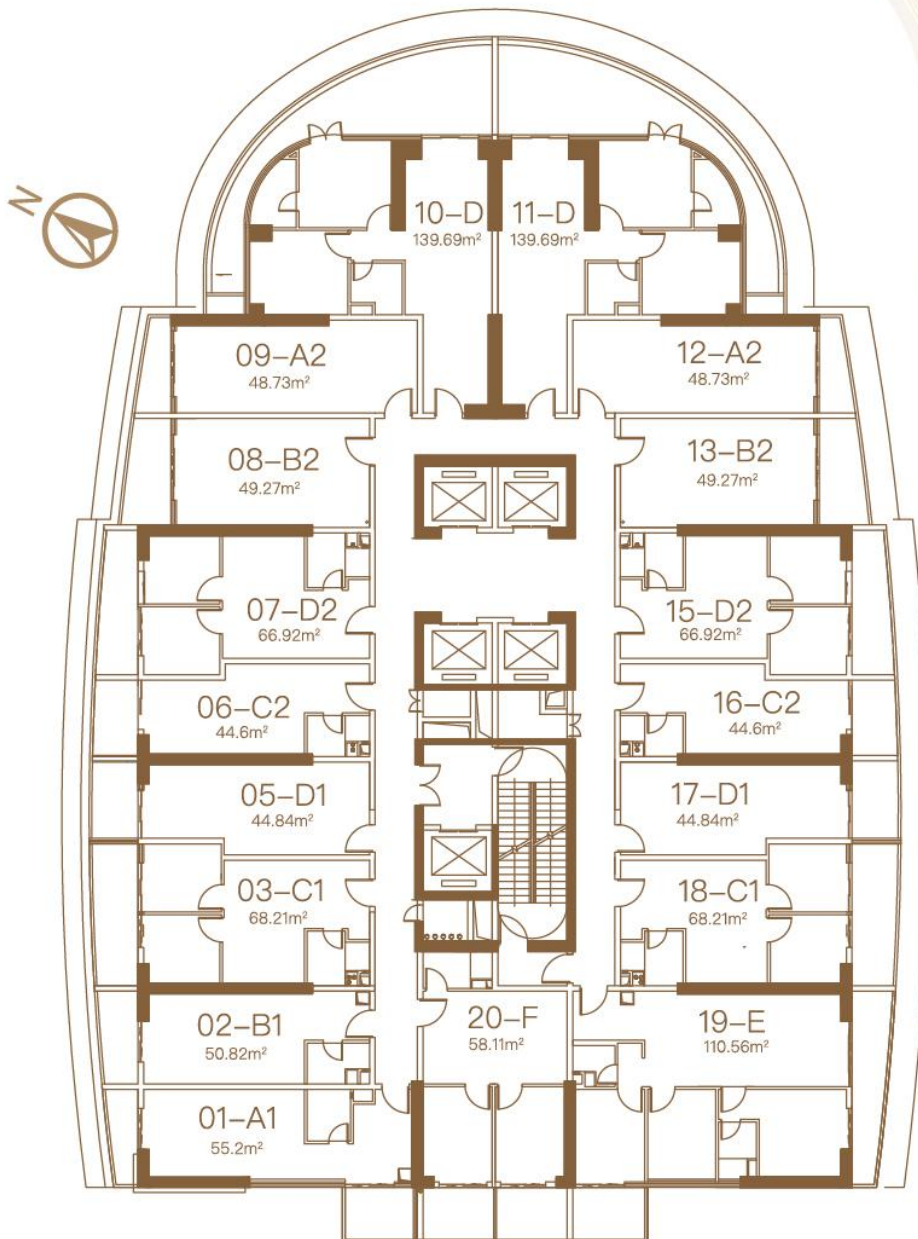
44-139m<sup>2</sup> 千亿都会心  
107-750m<sup>2</sup> 顶冠复式豪宅

44-139m<sup>2</sup> SAIL-SHAPED LUXURY PENTHOUSES  
AND MODERN UNITS RANGING FROM 107-750m<sup>2</sup>



# 一号楼标准层平面图

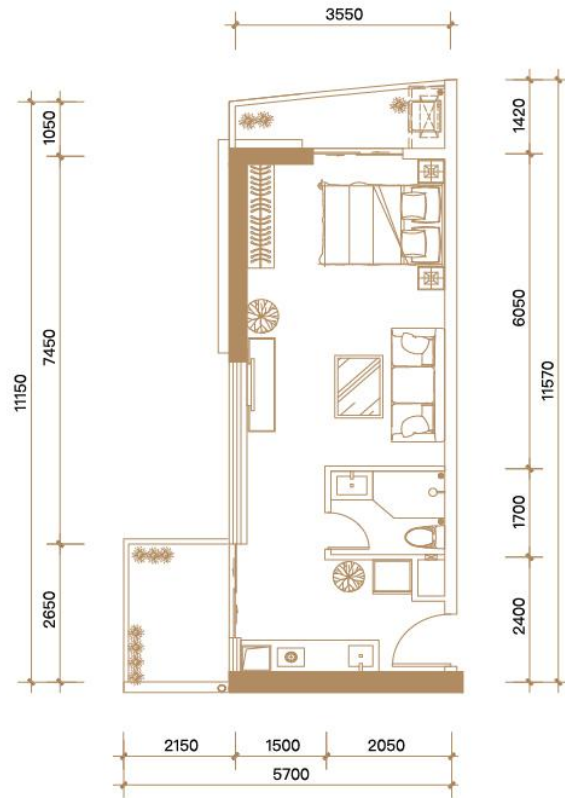
## Building 1 Typical Floor Layout



# 一号楼A1户型

Building 1 Type A1

建筑 | 约 55.20m<sup>2</sup> | 1房1厅1卫 | 1 bed rooms, 1 living rooms and 1 bath rooms  
 面积 | construction area: 55.20m<sup>2</sup>



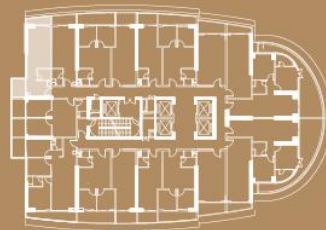
户型平面图

### 户型鉴赏

- ◎ 大尺度阳台, 尽揽一线河景
- ◎ 全明厅室空间, 格局阔绰
- ◎ 主卧相连阳光露台, 理想居所
- ◎ 舒适一房, 奢享精致都会生活

### House Types

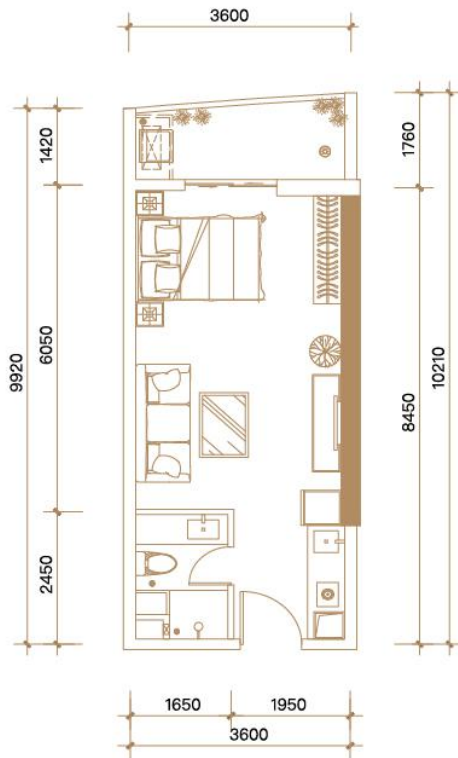
- Large-scale south-facing balcony, covering the upper level of human settlements;
- Transparent hall room space, restaurant for more sunshine beauty;
- The main bedroom connected with the sunshine terrace, ideal for a pure vacation life.
- Rich and comfortable space, meet the needs of many generations to enjoy the joy of big family.



# 一号楼B1户型

Building 1 Type B1

建筑 | 约 50.82m<sup>2</sup> | 1房1厅1卫 | 1 bed rooms, 1 living rooms and 1 bath rooms  
面积 | construction area: 50.82m<sup>2</sup>



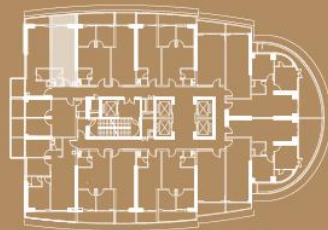
户型平面图

### 户型鉴赏

- ◎ 大尺度阳台, 尽揽一线河景
- ◎ 全明厅室空间, 格局阔绰
- ◎ 主卧相连阳光露台, 理想居所
- ◎ 舒适一房, 尊享精致都会生活

### House Types

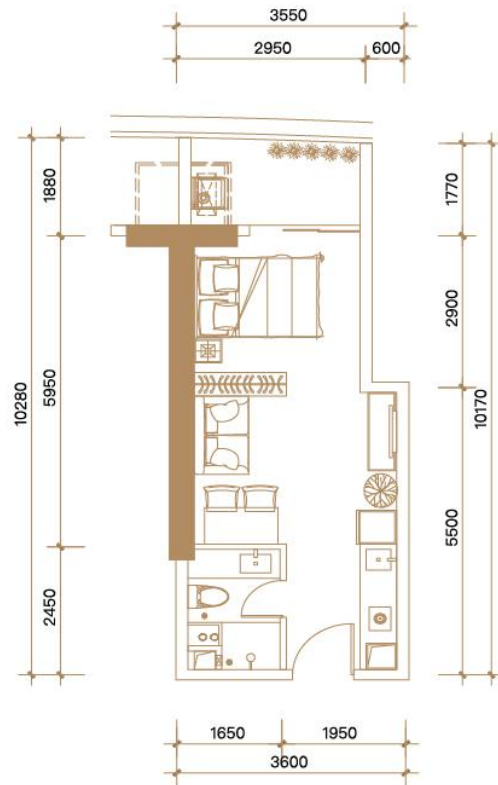
- Large-scale south-facing balcony, covering the upper level of human settlements;
- Transparent hall room space, restaurant for more sunshine beauty;
- The main bedroom connected with the sunshine terrace, ideal for a pure vacation life.
- Rich and comfortable space, meet the needs of many generations to enjoy the joy of big family.



# 一号楼C2户型

Building 1 Type C2

建筑 | 约  $44.60\text{m}^2$  | 1房1厅1卫 | 1 bed rooms, 1 living rooms and 1 bath rooms  
 面积 | construction area:  $44.60\text{m}^2$



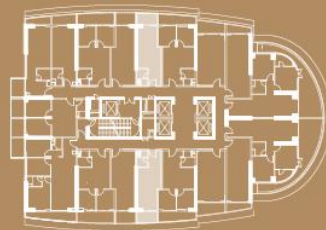
户型平面图

### 户型鉴赏

- ① 大尺度阳台, 尽揽一线河景
- ② 全明厅室空间, 格局阔绰
- ③ 主卧相连阳光露台, 理想居所
- ④ 舒适一房, 奢享精致都会生活

### House Types

- Large-scale south-facing balcony, covering the upper level of human settlements;
- Transparent hall room space, restaurant for more sunshine beauty;
- The main bedroom connected with the sunshine terrace, ideal for a pure vacation life.
- Rich and comfortable space, meet the needs of many generations to enjoy the joy of big family.





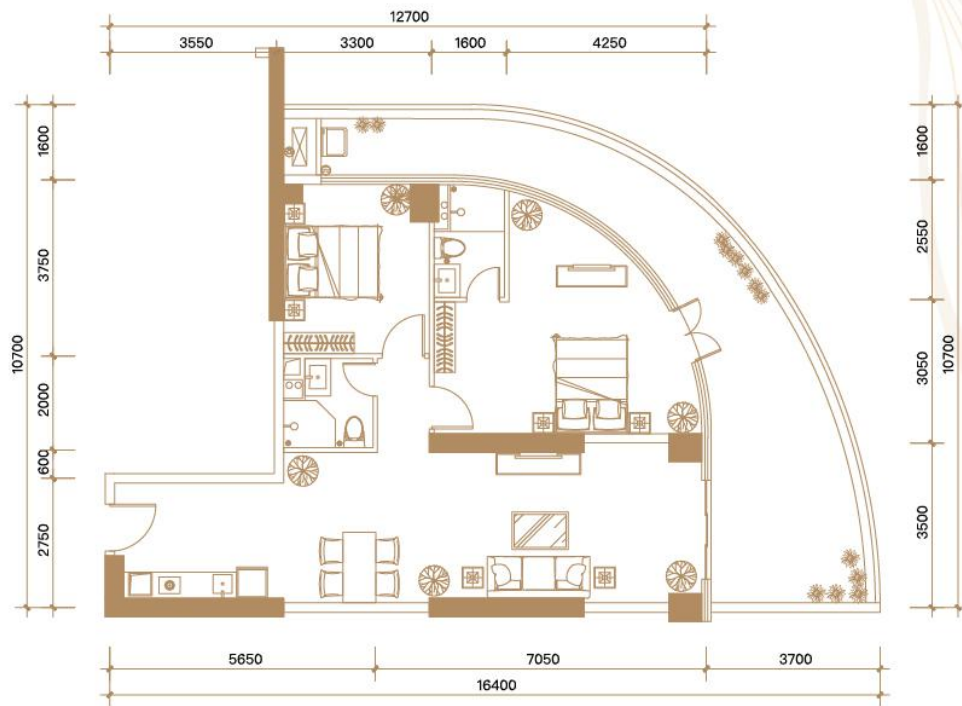
**MORGAN**  
EnMaison  
摩根·天御

# 一号楼D户型

Building 1 Type D



建筑 | 约 139.69m<sup>2</sup> | 2房1厅2卫 | 2 bed rooms, 1 living rooms and 2 bath rooms  
面积 | 139.69m<sup>2</sup> | construction area: 139.69m<sup>2</sup>



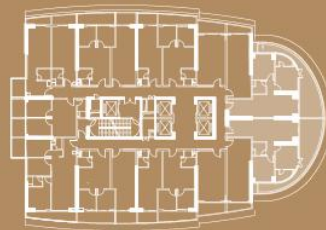
户型平面图

### 户型鉴赏

- ◎ 超大弧形阳台, 360°无遮挡河景
- ◎ 全明通透空间设计, 阔绰格局
- ◎ 主卧套房含独卫, 直接步入阳台
- ◎ 华美两房, 顶级名流奢享

### House Types

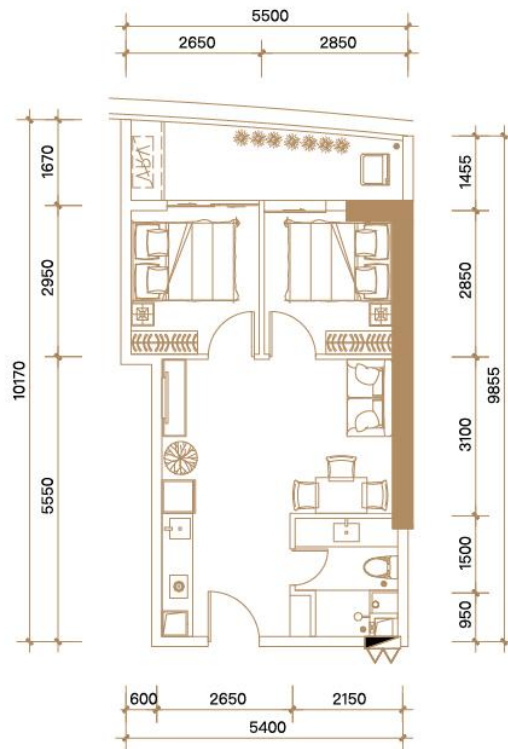
- Large-scale south-facing balcony, covering the upper level of human settlements;
- Transparent hall room space, restaurant for more sunshine beauty;
- The main bedroom connected with the sunshine terrace, ideal for a pure vacation life.
- Rich and comfortable space, meet the needs of many generations to enjoy the joy of big family.



# 一号楼D2户型

Building 1 Type D2

建筑 | 约  $66.92\text{m}^2$  | 2房1厅1卫 | 2 bed rooms, 1 living rooms and 1 bath rooms  
 面积 |  $66.92\text{m}^2$  | construction area:  $66.92\text{m}^2$



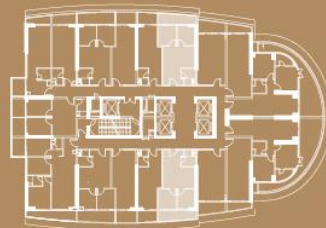
户型平面图

### 户型鉴赏

- ◎ 大尺度阳台, 尽揽一线河景
- ◎ 客餐厅一体, 乐享亲友欢聚
- ◎ 双卧相连阳光露台, 理想居所
- ◎ 阔绰两房, 畅享美妙生活

### House Types

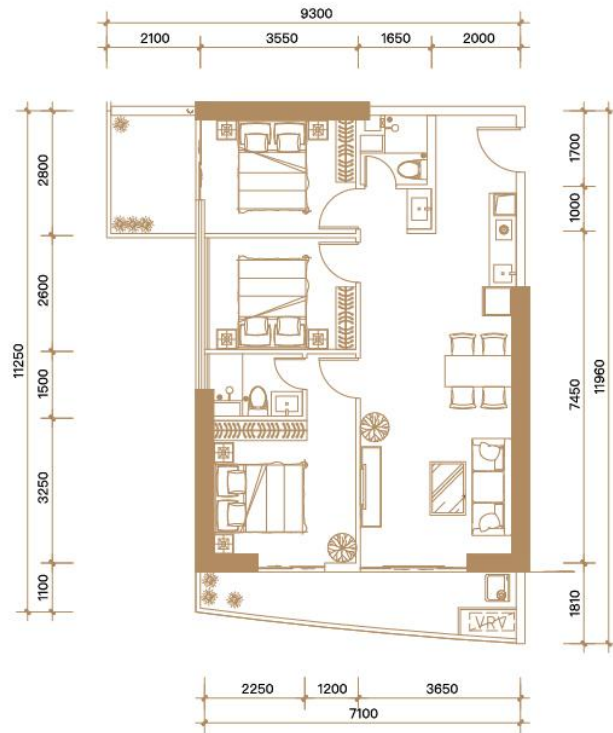
- Large-scale south-facing balcony, covering the upper level of human settlements;
- Transparent hall room space, restaurant for more sunshine beauty;
- The main bedroom connected with the sunshine terrace, ideal for a pure vacation life.
- Rich and comfortable space, meet the needs of many generations to enjoy the joy of big family.



# 一号楼E户型

Building 1 Type E

建筑 | 约 **110.56m<sup>2</sup>** | **3房1厅2卫** | 3 bed rooms, 1 living rooms and 2 bath rooms  
 面积 | **110.56m<sup>2</sup>** | construction area: 110.56m<sup>2</sup>



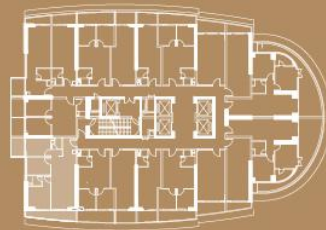
户型平面图

### 户型鉴赏

- ① 大尺度阳台, 尽揽一线河景
- ② 客餐厅一体, 乐享亲友欢聚
- ③ 主卧套房含独卫, 优雅私密
- ④ 奢逸三室, 尊享不凡生活

### House Types

- Large-scale south-facing balcony, covering the upper level of human settlements;
- Transparent hall room space, restaurant for more sunshine beauty;
- The main bedroom connected with the sunshine terrace, ideal for a pure vacation life.
- Rich and comfortable space, meet the needs of many generations to enjoy the joy of big family.

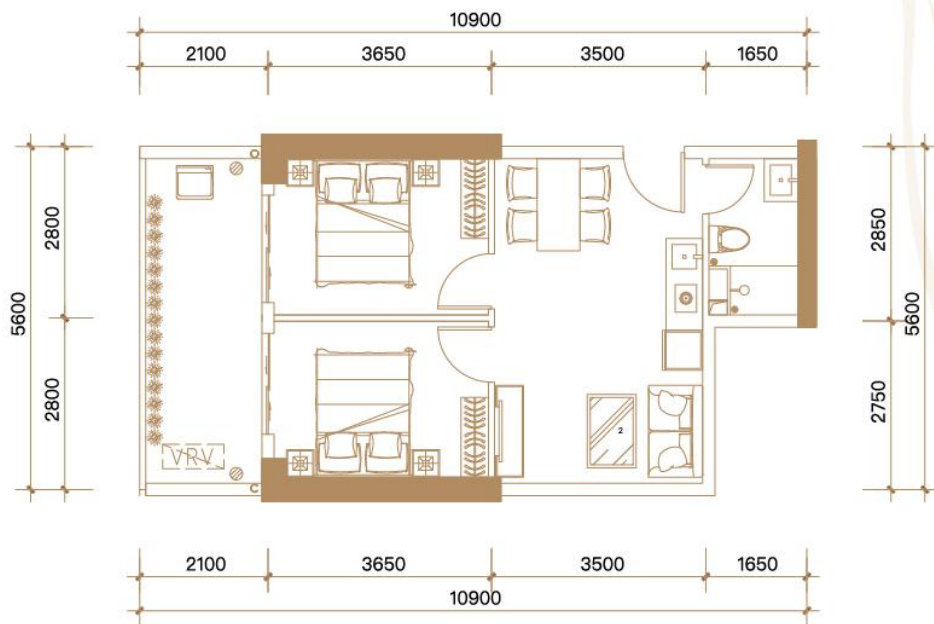




# 一号楼F户型

Building 1 Type F

建筑 | 约  $58.11\text{m}^2$  | 2房1厅1卫 | 2 bed rooms, 1 living rooms and 1 bath rooms  
 面积 |  $58.11\text{m}^2$  | construction area:  $58.11\text{m}^2$



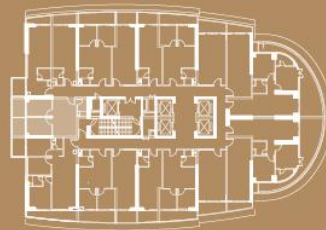
户型平面图

### 户型鉴赏

- ◎ 大尺度阳台, 尽揽一线河景
- ◎ 客餐厅一体, 乐享亲友欢聚
- ◎ 双卧相连阳光露台, 理想居所
- ◎ 阔绰两房, 畅享美妙生活

### House Types

- Large-scale south-facing balcony, covering the upper level of human settlements;
- Transparent hall room space, restaurant for more sunshine beauty;
- The main bedroom connected with the sunshine terrace, ideal for a pure vacation life.
- Rich and comfortable space, meet the needs of many generations to enjoy the joy of big family.



# 置业计划表

## PROPERTY PURCHASING PLAN



意向单位\_\_\_\_\_栋\_\_\_\_\_座\_\_\_\_\_房  
Intended company Address

建筑面积约\_\_\_\_\_m<sup>2</sup>  
Construction area

单价\_\_\_\_\_元/m<sup>2</sup> 总价\_\_\_\_\_元  
Unit price Total price

### 付款方式

#### PAYMENT

#### 一次性付款

##### LUMP-SUM PAYMENT

一次性付款折扣:\_\_\_\_\_元  
Discount for lump-sum payment

折后总价:\_\_\_\_\_元  
Total price after discount

#### 分期付款方式

##### PAYMENT BY INSTALMENT

累计优惠:\_\_\_\_\_ %  
Accumulated discount

优惠后单价:\_\_\_\_\_美元 总价:\_\_\_\_\_美元  
Unit price after discount Total price

定金:\_\_\_\_\_美元  
Deposit

分期次数 Time of instalment	分期节点 Stages	预计付款日期 Expected payment date	付款比例 Percentage of payment	付款额(\$) Total payment (\$)	备注 Remark

MORGAN

地址: 柬埔寨水净华分区湄公河路88号  
No.88, Mekong River St, sangkat chroy Changvar, Phnom Penh