

GREENERY AREA

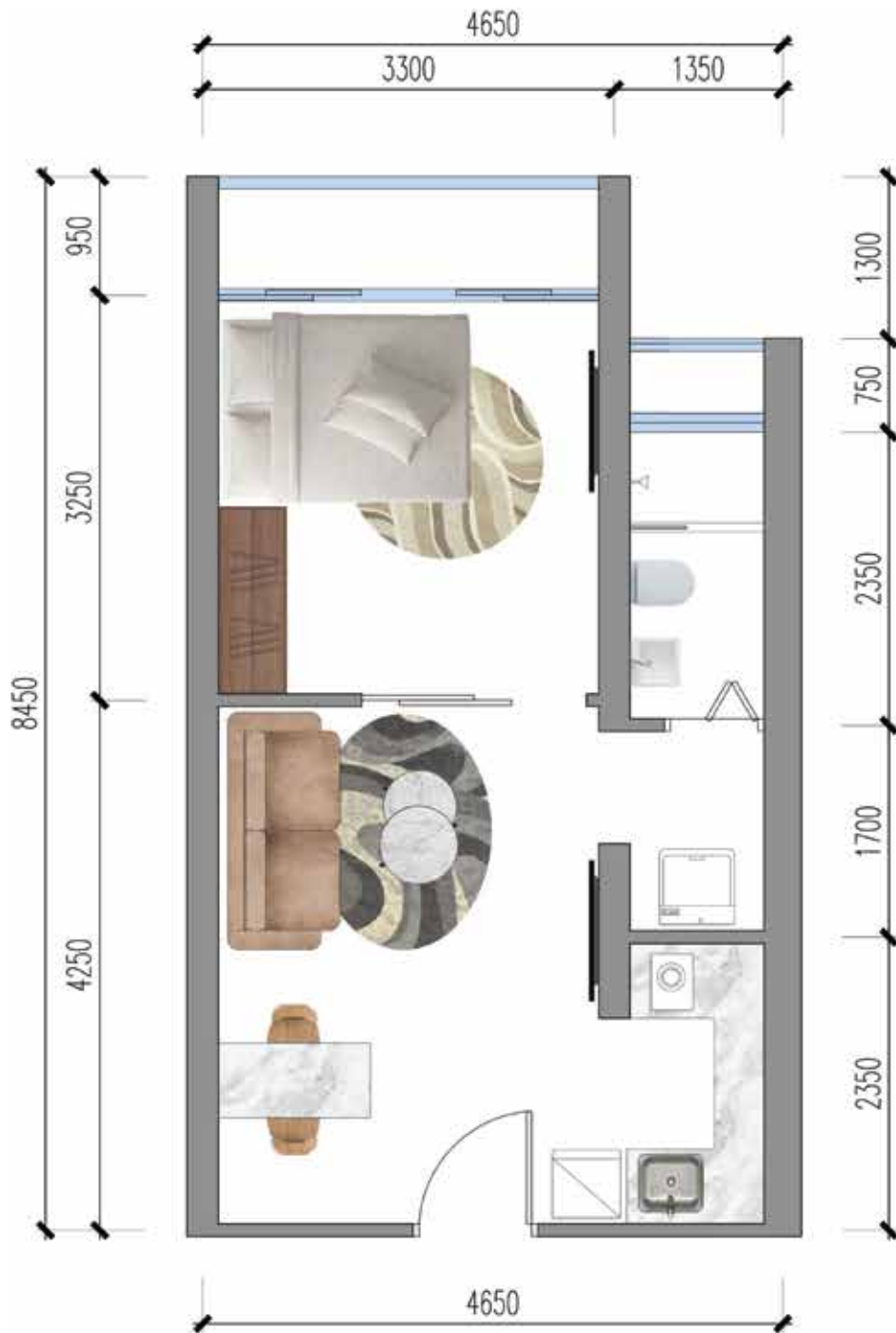
NOTE:
Just to inform that there will be different type of units on the same stack; as indicated on the layout diagram



BLOCKE-LC-MOS-V6(19.08.2022)

BUILDING E

1B-A	
39 SQM TOTAL NET AREA	52 SQM TOTAL GROSS AREA
1B-B	
30 SQM TOTAL NET AREA	40 SQM TOTAL GROSS AREA
1B-D	
42 SQM TOTAL NET AREA	56 SQM TOTAL GROSS AREA
1B-C	
41 SQM TOTAL NET AREA	55 SQM TOTAL GROSS AREA
1B-E	
28 SQM TOTAL NET AREA	37 SQM TOTAL GROSS AREA
1B-F	
40 SQM TOTAL NET AREA	53 SQM TOTAL GROSS AREA
1B-G	
34 SQM TOTAL NET AREA	45 SQM TOTAL GROSS AREA
2B-A (COZY FIT)	
46 SQM TOTAL NET AREA	61 SQM TOTAL GROSS AREA
2B-B (COZY FIT)	
44 SQM TOTAL NET AREA	59 SQM TOTAL GROSS AREA
2B-A (BIG)	
56 SQM TOTAL NET AREA	74 SQM TOTAL GROSS AREA
2B-B (BIG)	
56 SQM TOTAL NET AREA	75 SQM TOTAL GROSS AREA
2B-C	
73 SQM TOTAL NET AREA	98 SQM TOTAL GROSS AREA

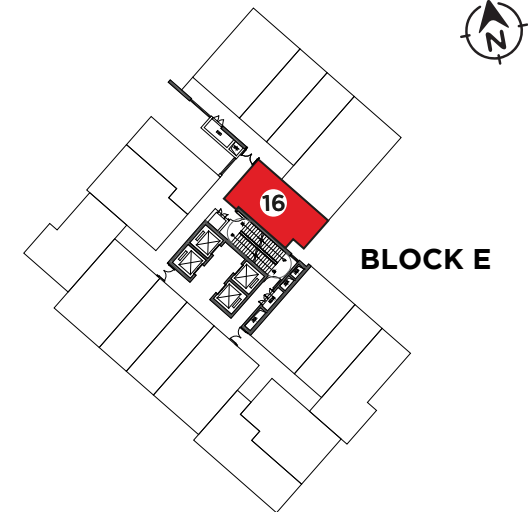


URBAN VILLAGE

E/1B-A

1 BEDROOM , 1 BATHROOM, 1 LIVING ROOM,
1 BALCONY, 1 KITCHEN.

LOCATED ON 5/F-8/F,
35/F-50/F LEVELS
AS UNIT #16



PHASE 2 SITE PLAN

TOTAL GROSS AREA: ~52 SQM

TOTAL NET AREA: ~39 SQM

Disclaimer:

These renderings are just for design suggestion,
it does not represent the actual handover standard.

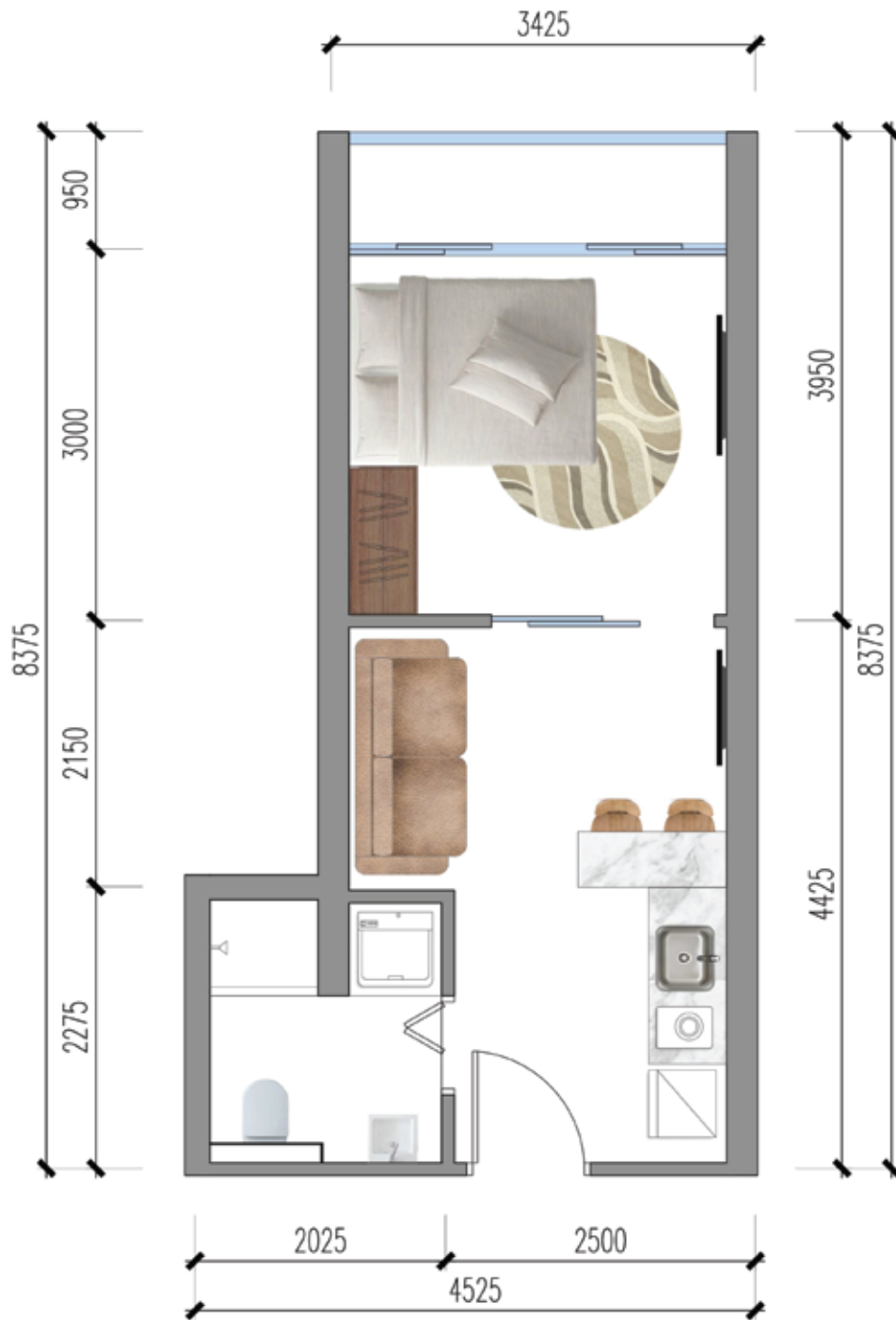
GET TO KNOW MORE ABOUT US

Urban Village Phnom Penh

live@villagephnompenh.com

National Road 2 | Chak Angre Leu | Phnom Penh



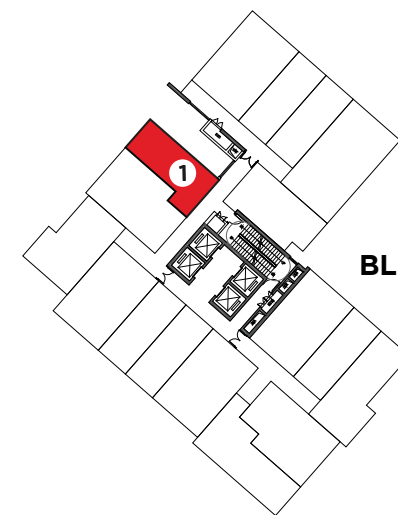


URBAN VILLAGE

E/1B-B

STUDIO-LIKED (1 BEDROOM), 1 BATHROOM, 1 LIVING ROOM, 1 BALCONY, 1 KITCHEN

LOCATED ON 5/F-8/F,
35/F-50/F LEVELS
AS UNIT #1



BLOCK E

PHASE 2 SITE PLAN

TOTAL GROSS AREA: ~40 SQM

TOTAL NET AREA: ~30 SQM

Disclaimer:

These renderings are just for design suggestion,
it does not represent the actual handover standard.

GET TO KNOW MORE ABOUT US

Urban Village Phnom Penh

live@villagephnompenh.com

National Road 2 | Chak Angre Leu | Phnom Penh

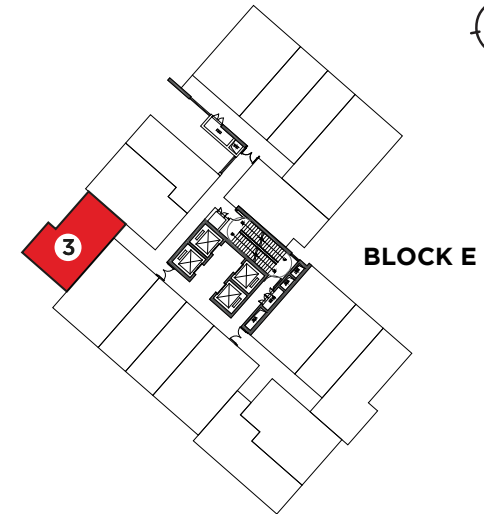


URBAN VILLAGE

E/1B-C

1 BEDROOM , 1 BATHROOM, 1 LIVING ROOM,
1 BALCONY, 1 KITCHEN

LOCATED ON 5/F-6/F
AS UNIT #3



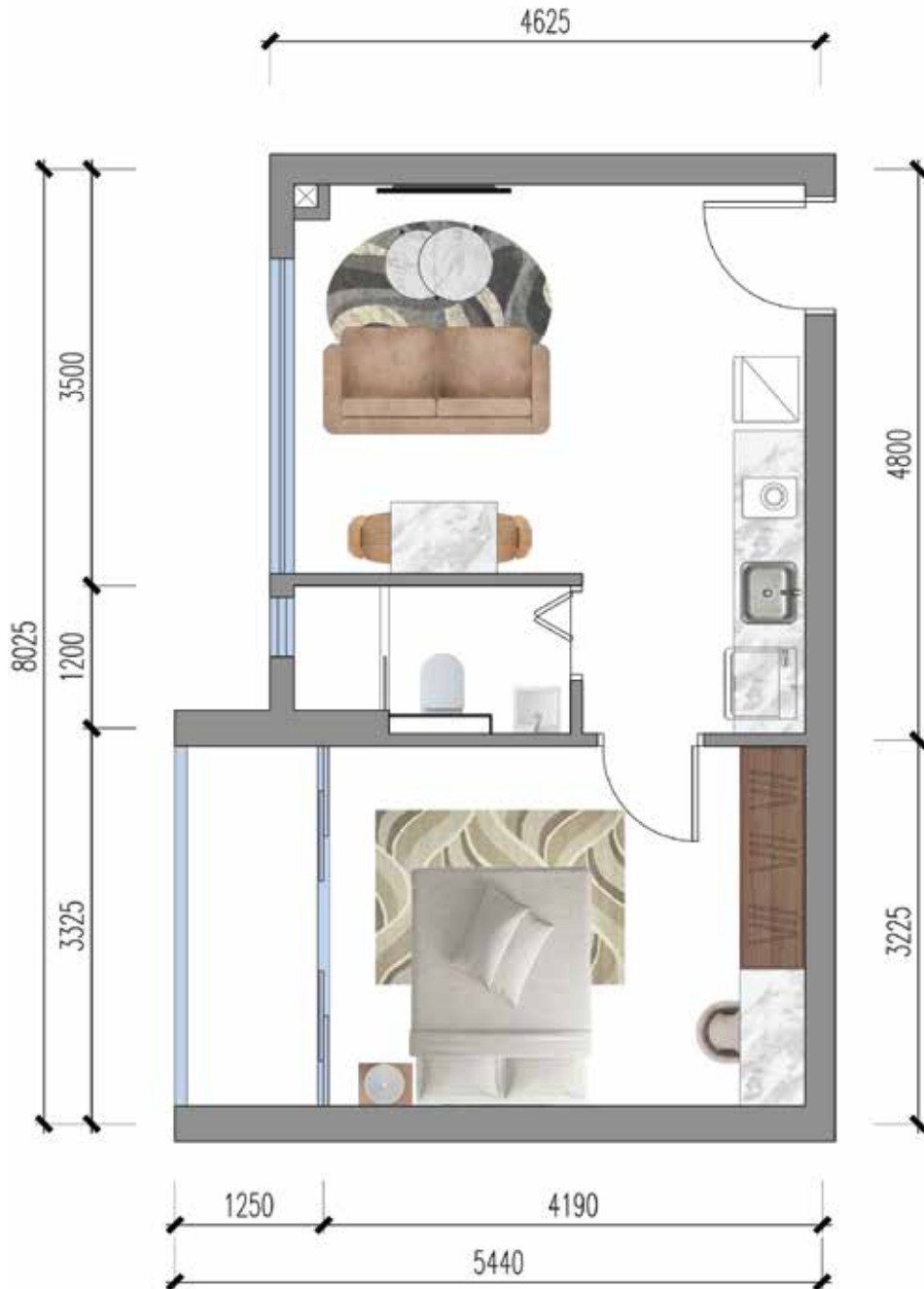
PHASE 2 SITE PLAN

TOTAL GROSS AREA: ~55 SQM

TOTAL NET AREA: ~41 SQM

Disclaimer:

These renderings are just for design suggestion,
it does not represent the actual handover standard.



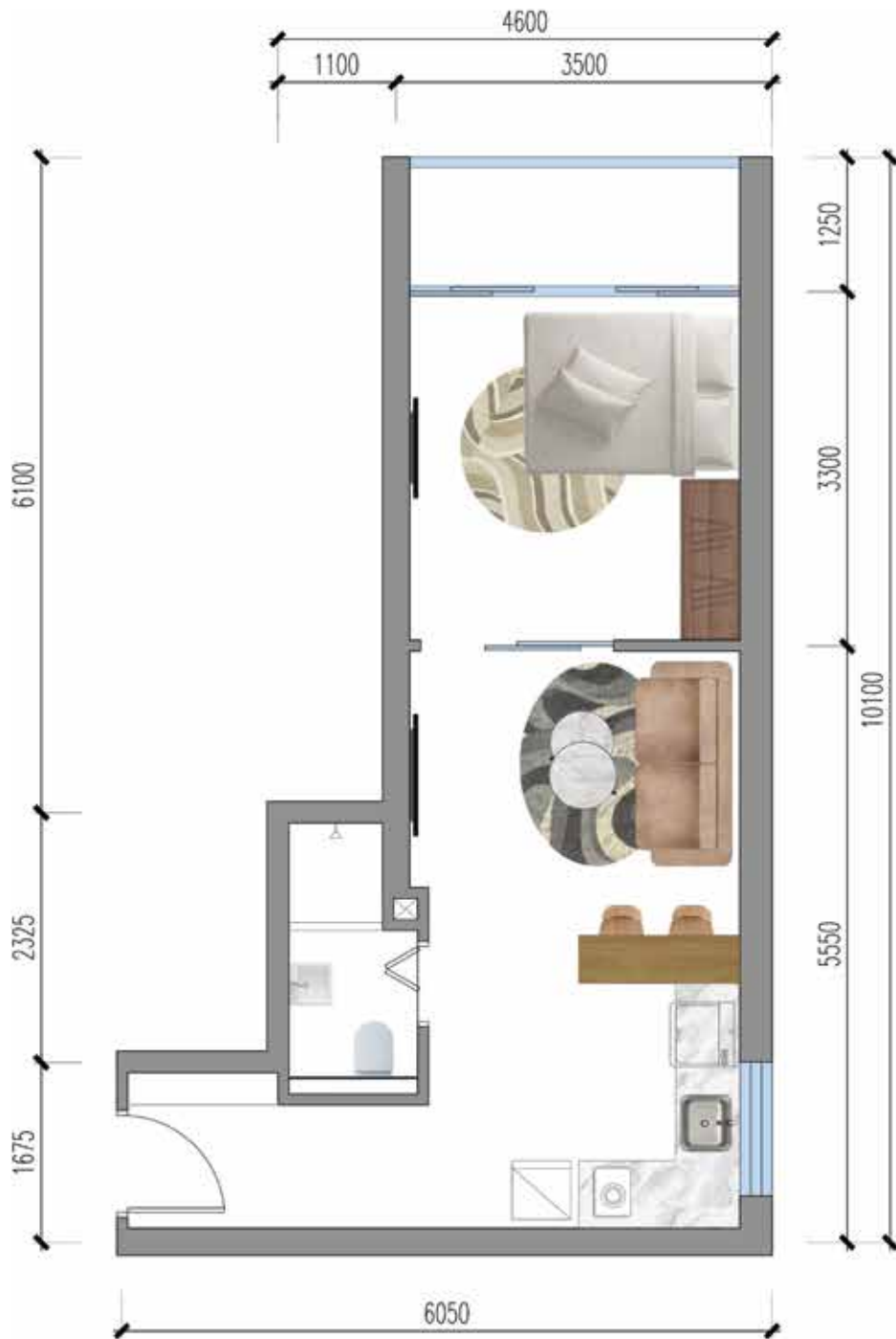
GET TO KNOW MORE ABOUT US

Urban Village Phnom Penh

live@villagephnompenh.com

National Road 2 | Chak Angre Leu | Phnom Penh



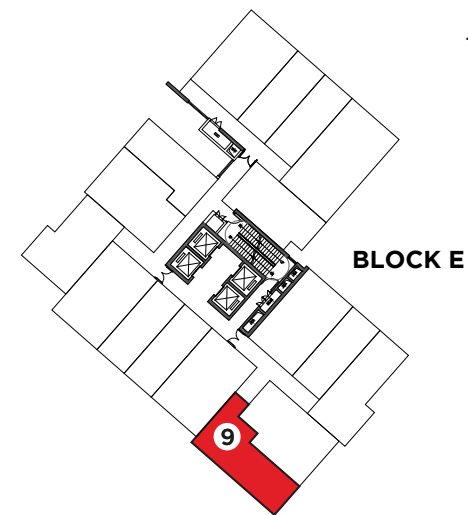


URBAN VILLAGE

E/1B-D

1 BEDROOM , 1 BATHROOM, 1 LIVING ROOM,
1 BALCONY, 1 KITCHEN

LOCATED ON 5/F-6/F,
39/F-42/F,
49/F-50/F LEVELS
AS UNIT #9



PHASE 2 SITE PLAN

TOTAL GROSS AREA: ~56 SQM

TOTAL NET AREA: ~42 SQM

Disclaimer:

These renderings are just for design suggestion,
it does not represent the actual handover standard.

GET TO KNOW MORE ABOUT US

Urban Village Phnom Penh

live@villagephnompenh.com

National Road 2 | Chak Angre Leu | Phnom Penh



URBAN VILLAGE

E/1B-E

STUDIO-LIKED (1 BEDROOM), 1 BATHROOM, 1 LIVING ROOM, 1 BALCONY, 1 KITCHEN

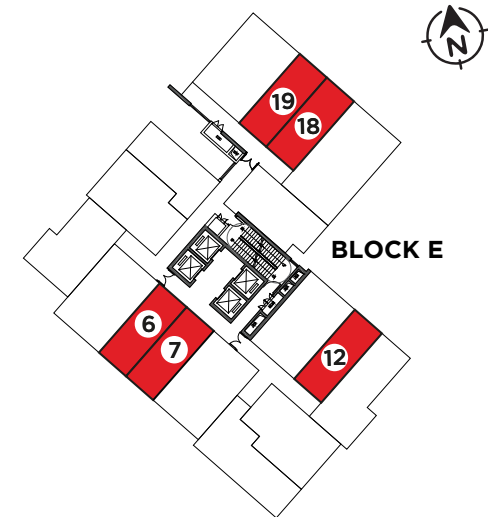
LOCATED ON 5/F-6/F,
AS UNIT #6

LOCATED ON 5/F-6/F,
LEVELS AS UNIT #7

LOCATED ON 5/F-8/F,
LEVELS AS UNIT #12

LOCATED ON 5/F-8/F,
37/F-42/F LEVELS
AS UNIT #18

LOCATED ON 5/F-8/F,
39/F-42/F LEVELS
AS UNIT #19



PHASE 2 SITE PLAN

TOTAL GROSS AREA: ~37 SQM

TOTAL NET AREA: ~28 SQM



1 BEDROOM

<OR>

SOHO

Disclaimer:

These renderings are just for design suggestion,
it does not represent the actual handover standard.

GET TO KNOW MORE ABOUT US

Urban Village Phnom Penh

live@villagephnompenh.com

National Road 2 | Chak Angre Leu | Phnom Penh



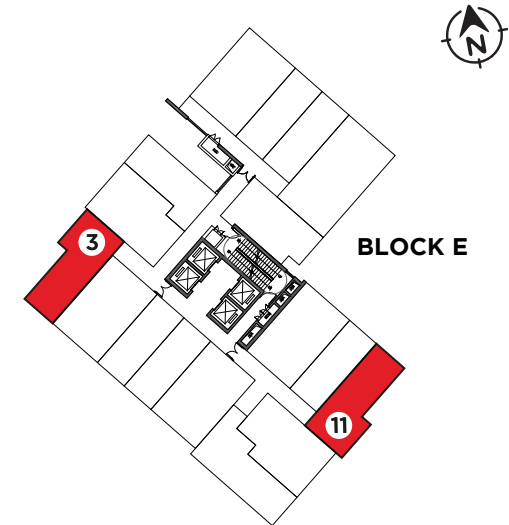
URBAN VILLAGE

E/1B-F

1 BEDROOM , 1 BATHROOM, 1 LIVING ROOM,
1 BALCONY, 1 KITCHEN

LOCATED ON 5/F-8/F,
LEVELS AS UNIT #11

LOCATED ON 35/F-50/F,
LEVELS AS UNIT #3



PHASE 2 SITE PLAN

TOTAL GROSS AREA: ~53 SQM

TOTAL NET AREA: ~40 SQM

Disclaimer:

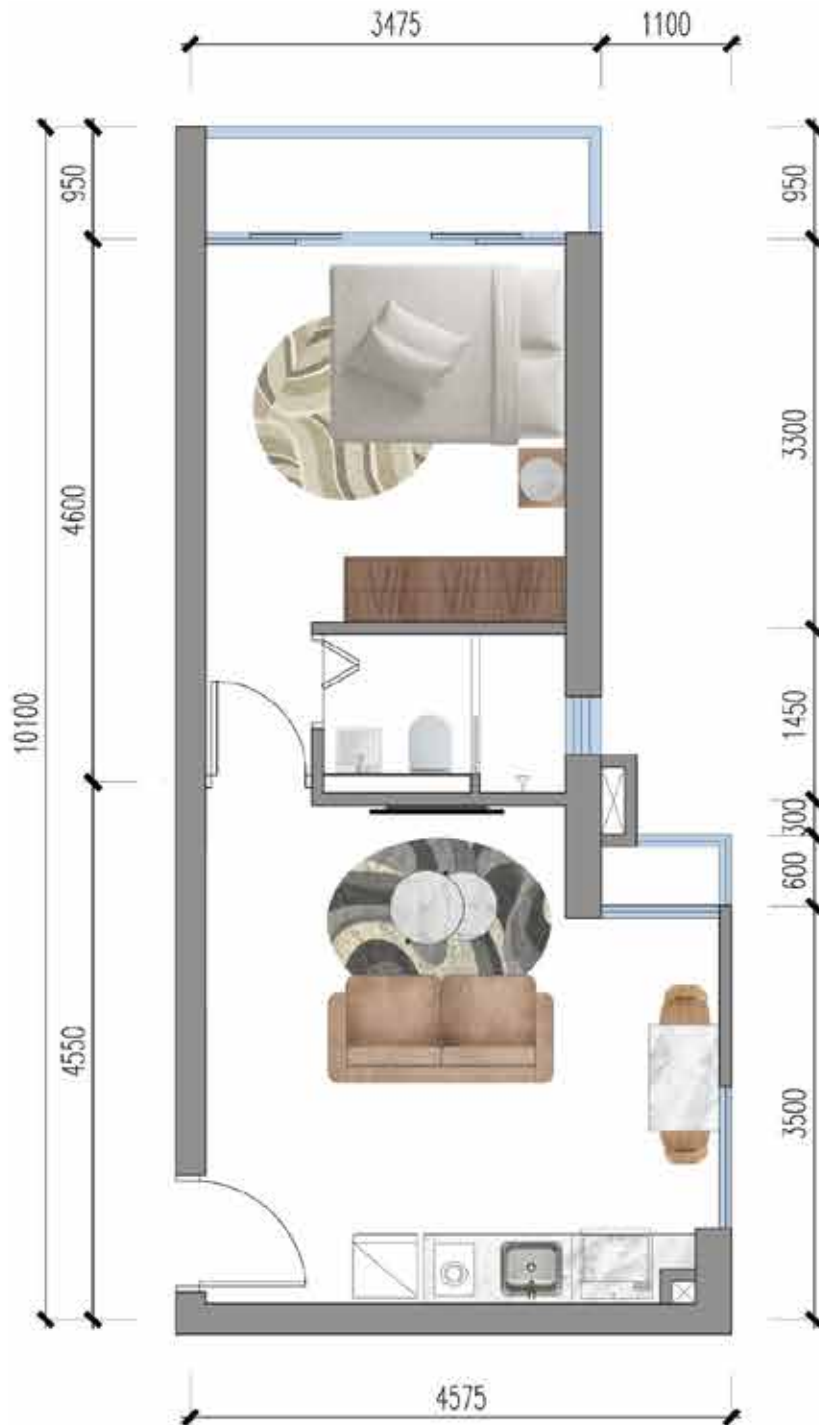
These renderings are just for design suggestion,
it does not represent the actual handover standard.

GET TO KNOW MORE ABOUT US

Urban Village Phnom Penh

live@villagephnompenh.com

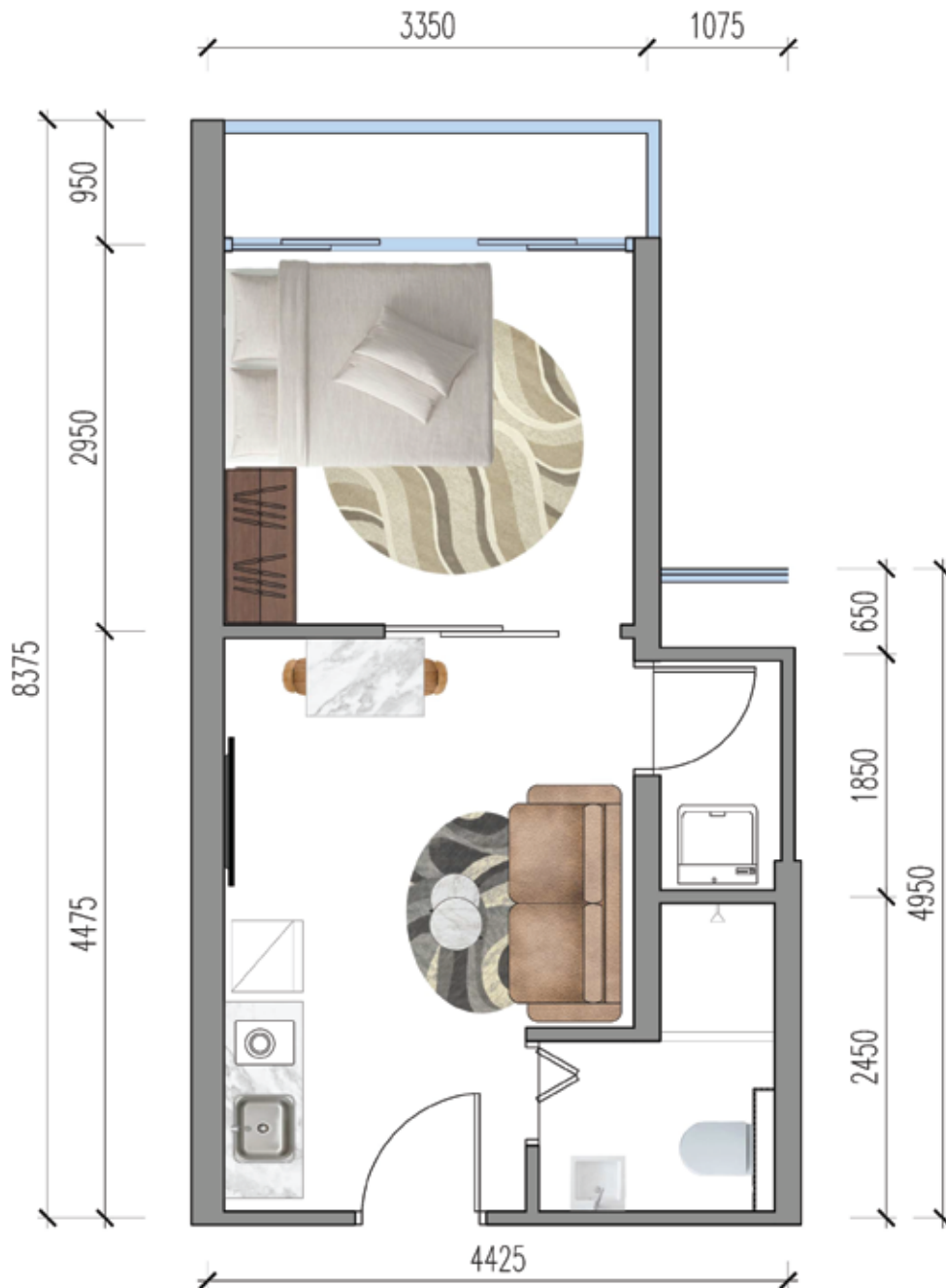
National Road 2 | Chak Angre Leu | Phnom Penh



URBAN VILLAGE

E/1B-G

**STUDIO-LIKED (1 BEDROOM), 1 BATHROOM, 1 LIVING ROOM,
1 BALCONY, 1 KITCHEN**



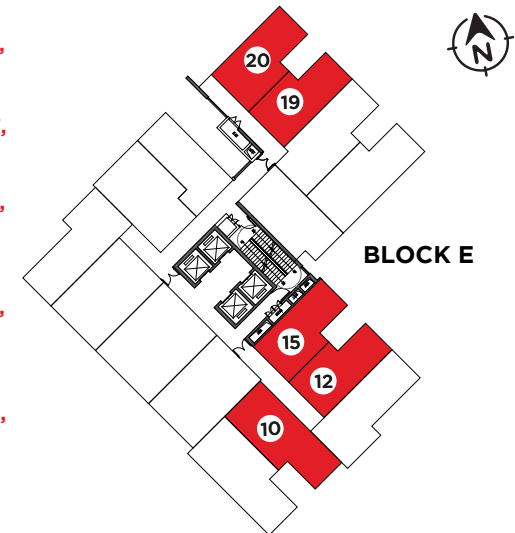
LOCATED ON 37/F-38/F,
LEVELS AS UNIT #10

LOCATED ON 47/F-50/F,
LEVELS AS UNIT #12

LOCATED ON 35/F-36/F,
41/F-50/F
LEVELS AS UNIT #15

LOCATED ON 37/F-38/F,
47/F-48/F
LEVELS AS UNIT #19

LOCATED ON 47/F-48/F,
LEVELS AS UNIT #20



PHASE 2 SITE PLAN

TOTAL GROSS AREA: ~45 SQM

TOTAL NET AREA: ~34 SQM

Disclaimer:

These renderings are just for design suggestion,
it does not represent the actual handover standard.

GET TO KNOW MORE ABOUT US

Urban Village Phnom Penh

live@villagephnompenh.com

National Road 2 | Chak Angre Leu | Phnom Penh



E/2B-A (COZY FIT)

**2 BEDROOMS OR 1 BEDROOM AND 1 OFFICE,
1 BATHROOM, 1 LIVING ROOM, 1 BALCONY, 1 KITCHEN**

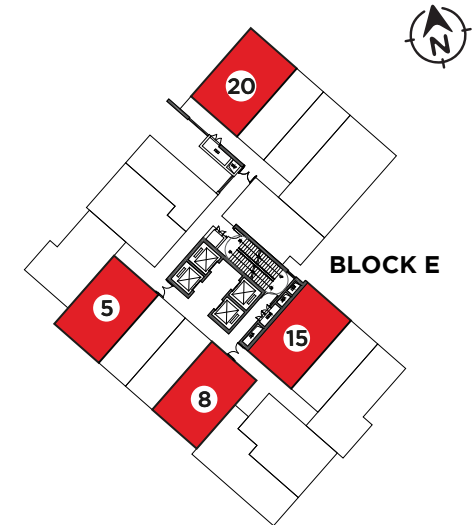


LOCATED ON 5/F-6/F,
35/F-50/F
LEVELS AS UNIT #5

LOCATED ON 5/F-6/F,
35/F-50/F
LEVELS AS UNIT #8

LOCATED ON 5/F-8/F,
37/F-40/F
LEVELS AS UNIT #15

LOCATED ON 5/F-8/F
39/F-44/F
LEVELS AS UNIT #20



PHASE 2 SITE PLAN

TOTAL GROSS AREA: ~61 SQM

TOTAL NET AREA: ~46 SQM

Disclaimer:

These renderings are just for design suggestion,
it does not represent the actual handover standard.

GET TO KNOW MORE ABOUT US

Urban Village Phnom Penh

live@villagephnompenh.com

National Road 2 | Chak Angre Leu | Phnom Penh

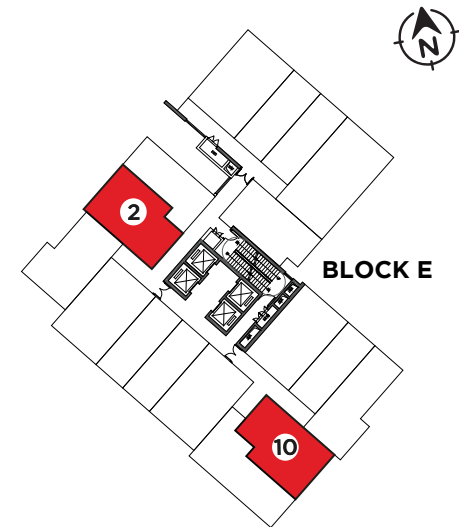


E/2B-B (COZY FIT)

**2 BEDROOMS OR 1 BEDROOM AND 1 OFFICE,
1 BATHROOM, 1 LIVING ROOM, 1 BALCONY, 1 KITCHEN**

**LOCATED ON 5/F-8/F,
35/F-44/F
47/F-50/F
LEVELS AS UNIT #2**

**LOCATED ON 5/F-6/F,
39/F-42/F
49/F-50/F
LEVELS AS UNIT #10**



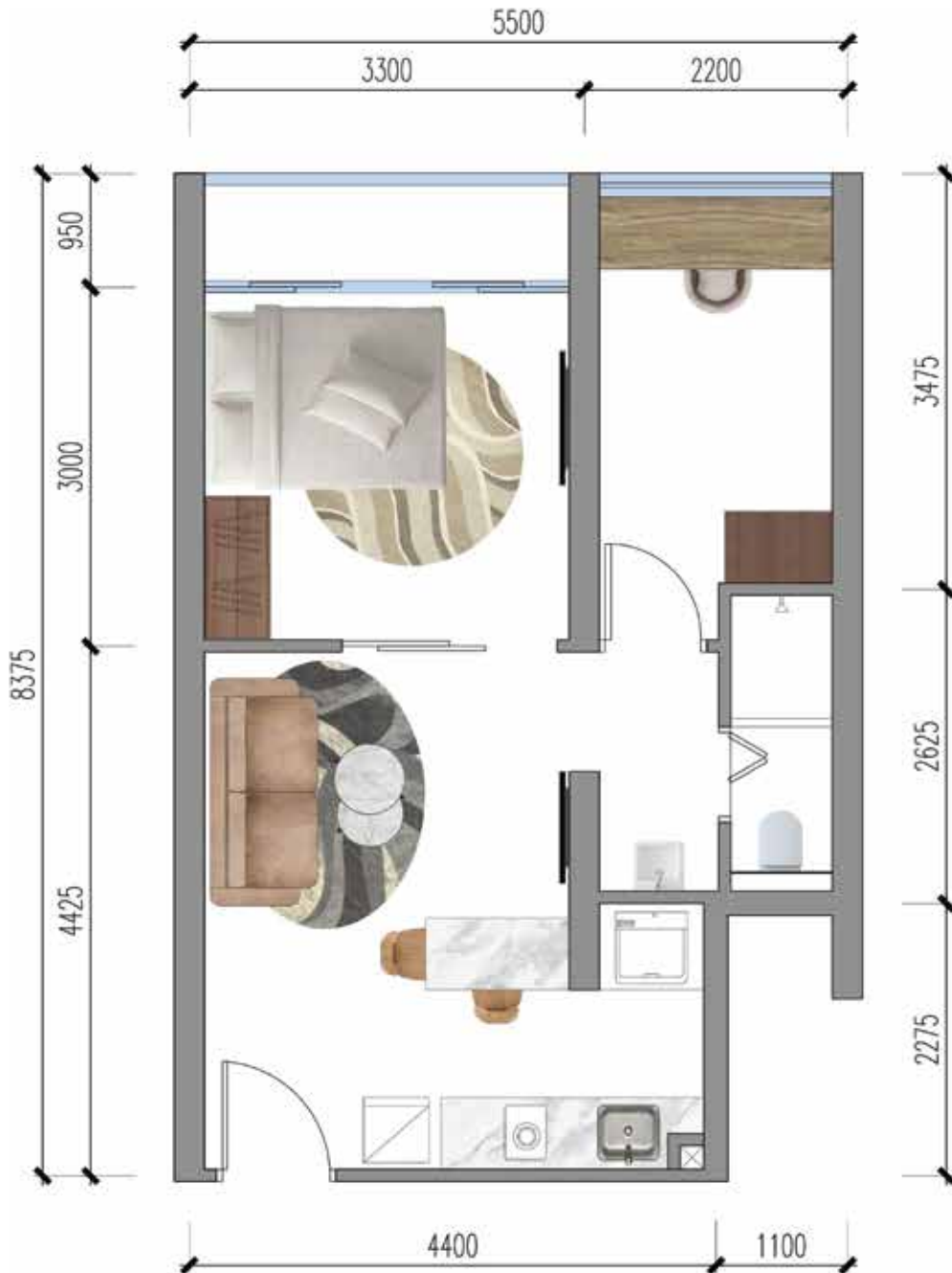
PHASE 2 SITE PLAN

TOTAL GROSS AREA: ~59 SQM

TOTAL NET AREA: ~44 SQM

Disclaimer:

These renderings are just for design suggestion,
it does not represent the actual handover standard.



GET TO KNOW MORE ABOUT US

Urban Village Phnom Penh

live@villagephnompenh.com

National Road 2 | Chak Angre Leu | Phnom Penh

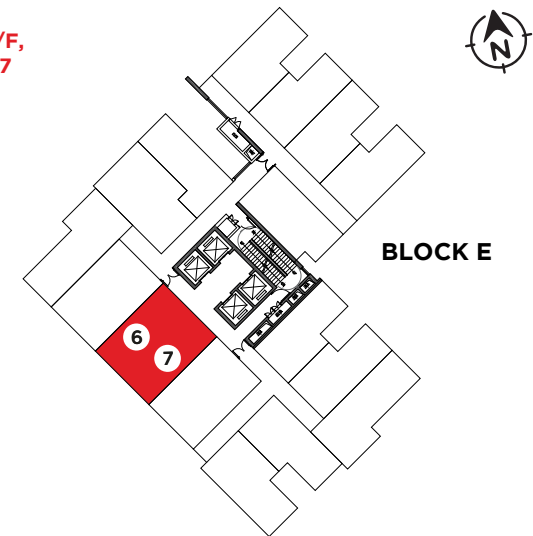


URBAN VILLAGE

E/2B-A (BIG)

2 BEDROOMS, 1 BATHROOM, 1 LIVING ROOM,
1 BALCONY, 1 KITCHEN

LOCATED ON 35/F-50/F,
LEVELS AS UNIT #6,#7



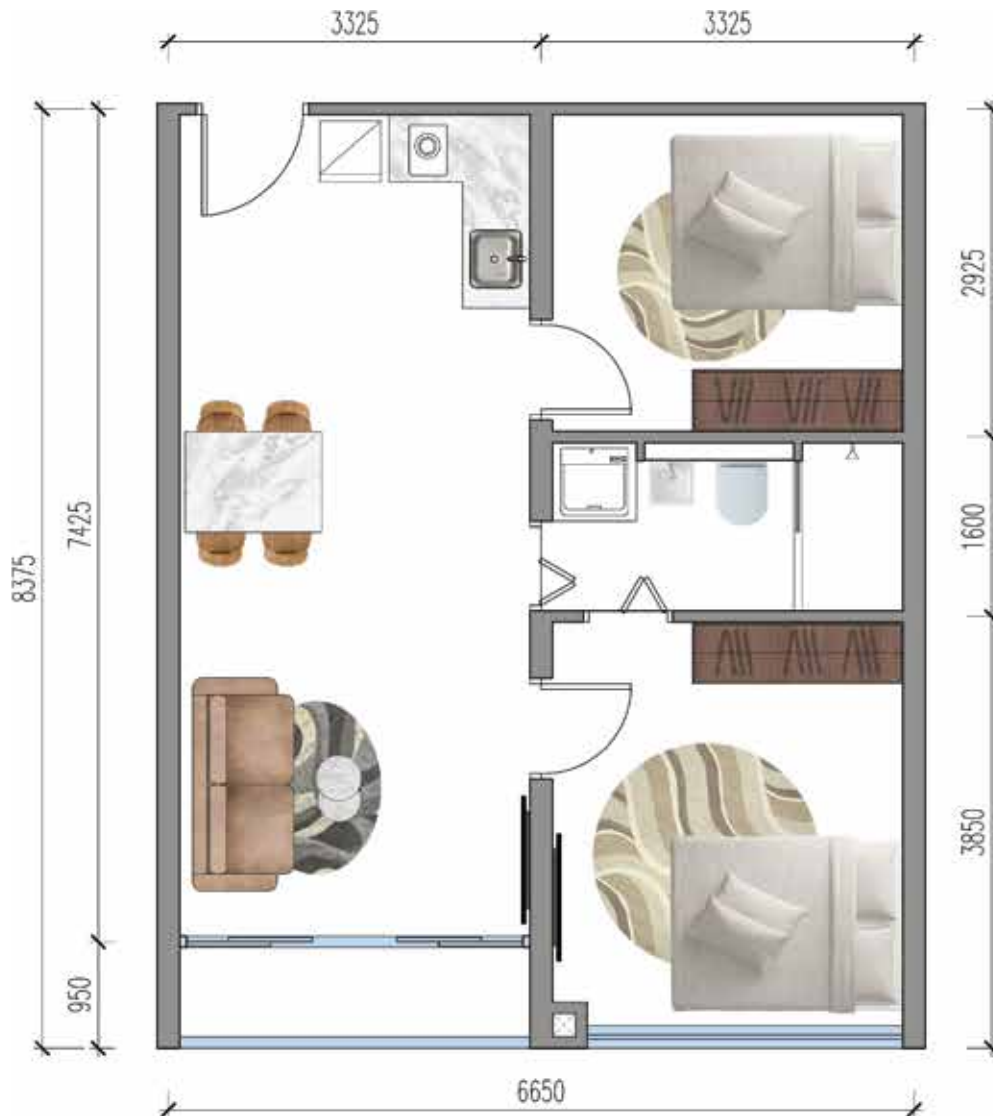
PHASE 2 SITE PLAN

TOTAL GROSS AREA: ~74 SQM

TOTAL NET AREA: ~56 SQM

Disclaimer:

These renderings are just for design suggestion,
it does not represent the actual handover standard.



GET TO KNOW MORE ABOUT US

Urban Village Phnom Penh

live@villagephnompenh.com

National Road 2 | Chak Angre Leu | Phnom Penh

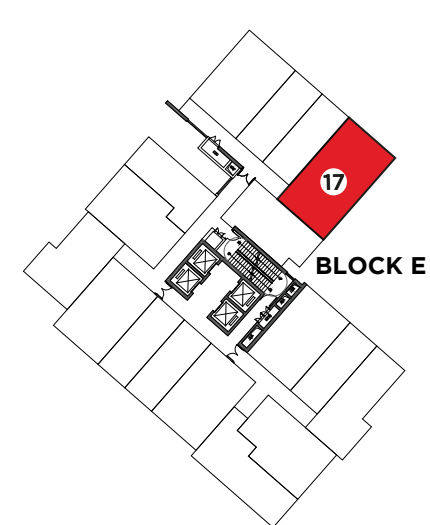


URBAN VILLAGE

E/2B-B (BIG)

2 BEDROOMS OR 1 BEDROOM AND 1 OFFICE,
1 BATHROOM, 1 LIVING ROOM, 1 BALCONY, 1 KITCHEN

LOCATED ON 5/F-8/F,
37/F-42/F
LEVELS AS UNIT #17



PHASE 2 SITE PLAN

TOTAL GROSS AREA: ~75 SQM

TOTAL NET AREA: ~56 SQM

Disclaimer:

These renderings are just for design suggestion,
it does not represent the actual handover standard.

GET TO KNOW MORE ABOUT US

 Urban Village Phnom Penh

 live@villagephnompenh.com

 National Road 2 | Chak Angre Leu | Phnom Penh

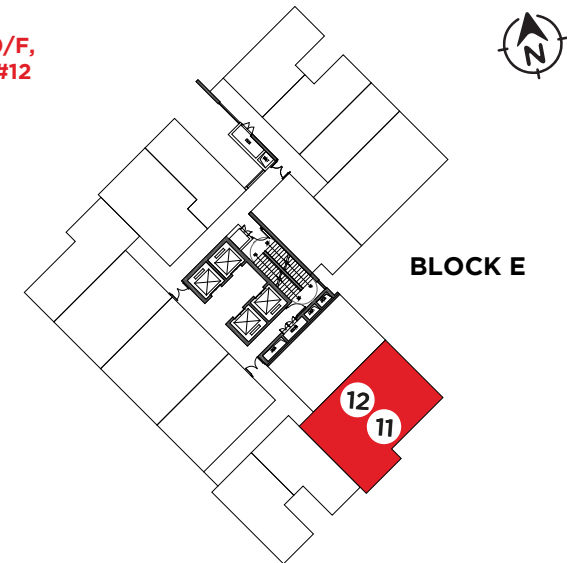


URBAN VILLAGE

E/2B-C

2 BEDROOMS, 2 BATHROOMS, 1 LIVING ROOM,
1 BALCONY, 1 KITCHEN

LOCATED ON 37/F-40/F,
LEVELS AS UNIT #11, #12



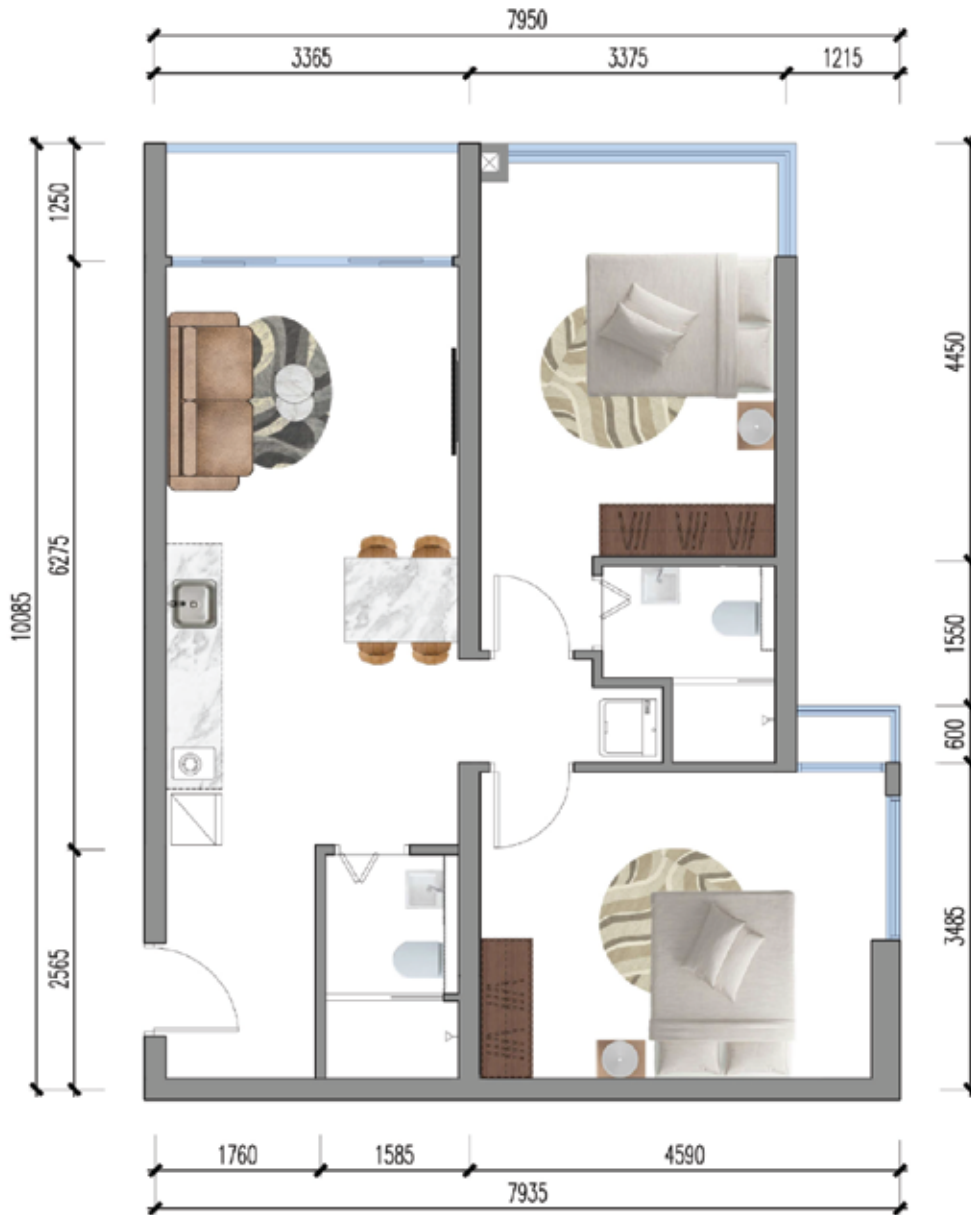
PHASE 2 SITE PLAN

TOTAL GROSS AREA: ~98 SQM

TOTAL NET AREA: ~73 SQM

Disclaimer:

These renderings are just for design suggestion,
it does not represent the actual handover standard.



GET TO KNOW MORE ABOUT US

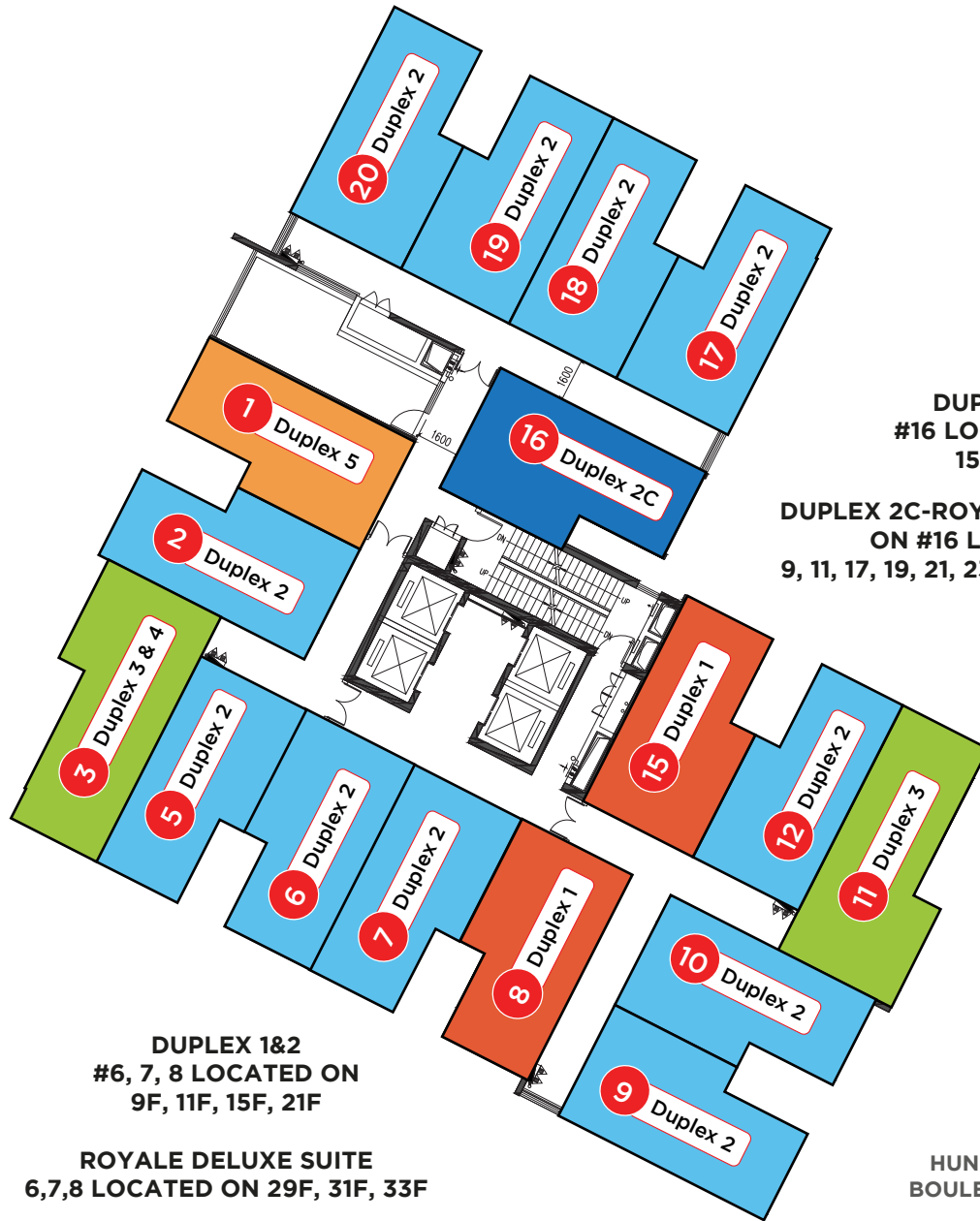
Urban Village Phnom Penh

live@villagephnompenh.com

National Road 2 | Chak Angre Leu | Phnom Penh



GREENERY AREA



BUILDING E

DUPLEX 1

67 SQM
TOTAL NET AREA

80 SQM
TOTAL GROSS AREA

DUPLEX 2

70 SQM
TOTAL NET AREA

83 SQM
TOTAL GROSS AREA

DUPLEX 2C

71 SQM
TOTAL NET AREA

83 SQM
TOTAL GROSS AREA

DUPLEX 3

77 SQM
TOTAL NET AREA

91 SQM
TOTAL GROSS AREA

DUPLEX 4

77 SQM
TOTAL NET AREA

91 SQM
TOTAL GROSS AREA

DUPLEX 5

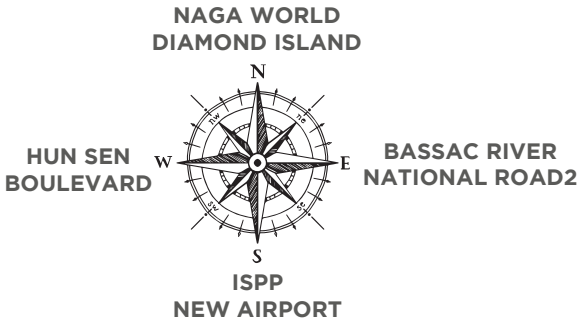
72 SQM
TOTAL NET AREA

84 SQM
TOTAL GROSS AREA

ROYALE DELUXE SUITE

72 SQM
TOTAL NET AREA

84 SQM
TOTAL GROSS AREA



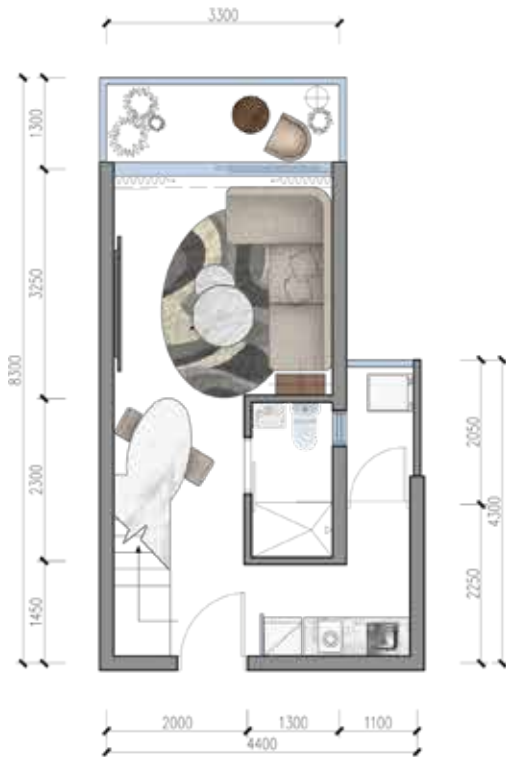
URBAN VILLAGE

DUPLEX 1

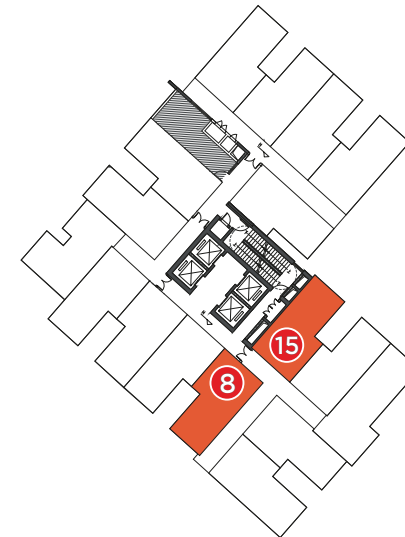
- UP TO 3 BEDROOMS • 2 BALCONIES •
- EASILY SPLIT INTO RENTABLE UNITS •
- BUSINESS/RESIDENTIAL MIX •

LOWER FLOOR

UPPER FLOOR



PHASE 2 SITE PLAN



BLOCK E

LOCATED ON 9/F-27/F LEVELS
AS UNIT #8, #15

TOTAL GROSS AREA: ~80 SQM

TOTAL NET AREA: ~67 SQM

Disclaimer:

These renderings are just for design suggestion,
it does not represent the actual handover standard.

GET TO KNOW MORE ABOUT US

Urban Village Phnom Penh

live@villagephnompenh.com

National Road 2 | Chak Angre Leu | Phnom Penh



URBAN VILLAGE

DUPLIX 2

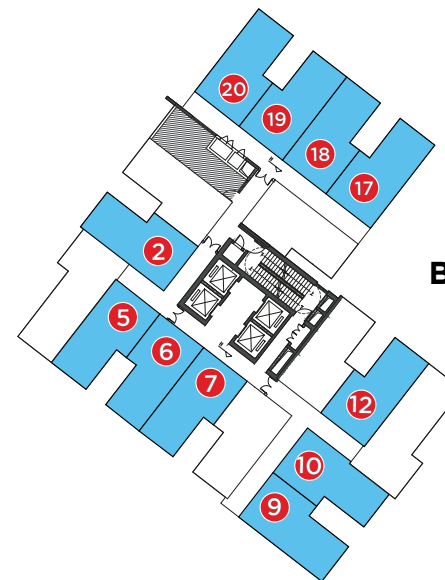
- UP TO 3 BEDROOMS • 2 BALCONIES •
- EASILY SPLIT INTO RENTABLE UNITS •
- BUSINESS/RESIDENTIAL MIX •

LOWER FLOOR

UPPER FLOOR



PHASE 2 SITE PLAN



BLOCK E

Disclaimer:

These renderings are just for design suggestion, it does not represent the actual handover standard.

TOTAL GROSS AREA: ~83 SQM

TOTAL NET AREA: ~70 SQM

GET TO KNOW MORE ABOUT US

Urban Village Phnom Penh

live@villagephnompenh.com

National Road 2 | Chak Angre Leu | Phnom Penh



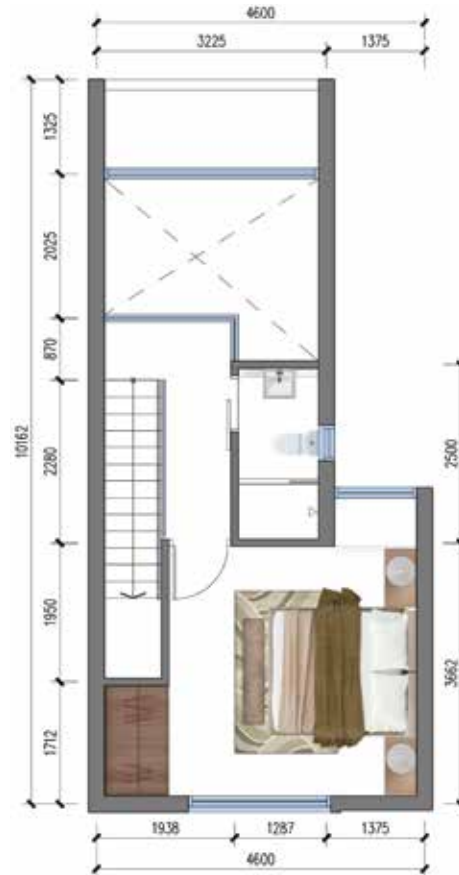
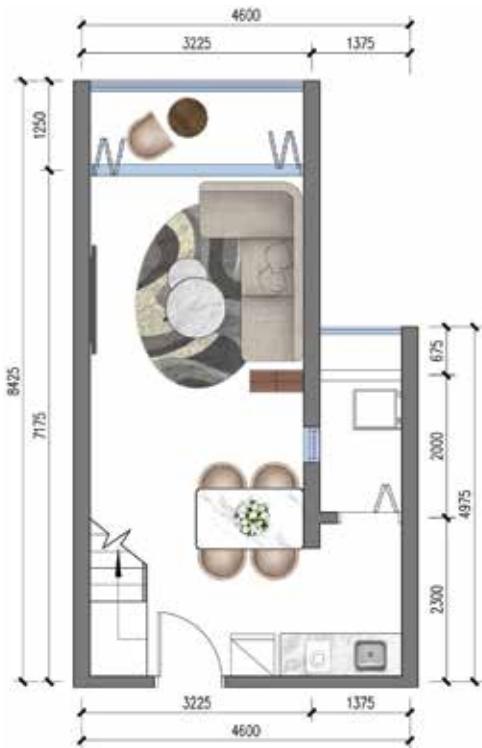
URBAN VILLAGE

DUPLEX 2C

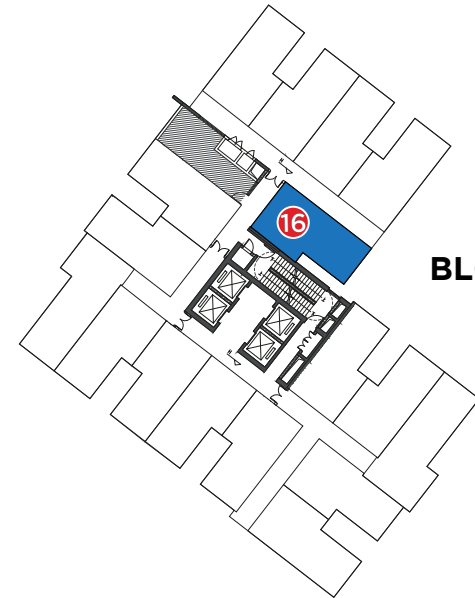
- UP TO 2 BEDROOMS • 2 BALCONIES •
- EASILY SPLIT INTO RENTABLE UNITS •
- BUSINESS/RESIDENTIAL MIX •

LOWER FLOOR

UPPER FLOOR



PHASE 2 SITE PLAN



BLOCK E

TOTAL GROSS AREA: ~83 SQM

TOTAL NET AREA: ~71 SQM

Disclaimer:

These renderings are just for design suggestion, it does not represent the actual handover standard.

GET TO KNOW MORE ABOUT US

Urban Village Phnom Penh

live@villagephnompenh.com

National Road 2 | Chak Angre Leu | Phnom Penh



URBAN VILLAGE

DUPEX 3

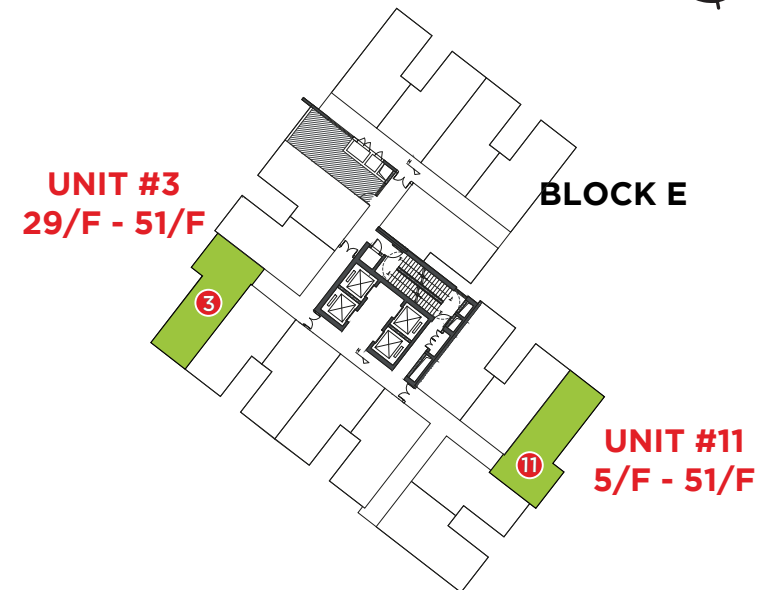
- UP TO 3 BEDROOMS • 2 BALCONIES •
- EASILY SPLIT INTO RENTABLE UNITS •
- BUSINESS/RESIDENTIAL MIX •

LOWER FLOOR

UPPER FLOOR



PHASE 2 SITE PLAN



TOTAL GROSS AREA: ~91 SQM

TOTAL NET AREA: ~77 SQM

Disclaimer:

These renderings are just for design suggestion, it does not represent the actual handover standard.

GET TO KNOW MORE ABOUT US

Urban Village Phnom Penh

live@villagephnompenh.com

National Road 2 | Chak Angre Leu | Phnom Penh



URBAN VILLAGE DUPLEX 4

- UP TO 3 BEDROOMS • 2 BALCONIES •
- EASILY SPLIT INTO RENTABLE UNITS •
- BUSINESS/RESIDENTIAL MIX •

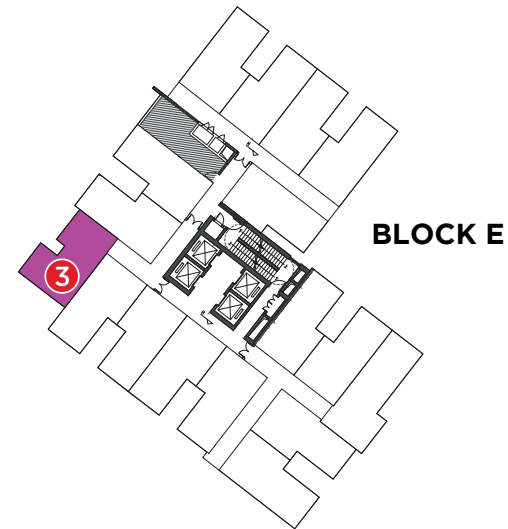
LOWER FLOOR



UPPER FLOOR



PHASE 2 SITE PLAN



LOCATED ON 5/F-27/F
LEVELS AS UNIT #3

TOTAL GROSS AREA: ~91 SQM

TOTAL NET AREA: ~77 SQM

Disclaimer:

These renderings are just for design suggestion,
it does not represent the actual handover standard.

GET TO KNOW MORE ABOUT US

Urban Village Phnom Penh

live@villagephnompenh.com

National Road 2 | Chak Angre Leu | Phnom Penh

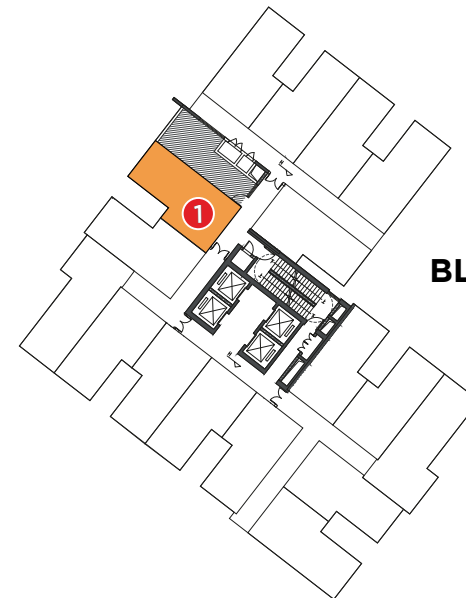


URBAN VILLAGE

DUPLEX 5

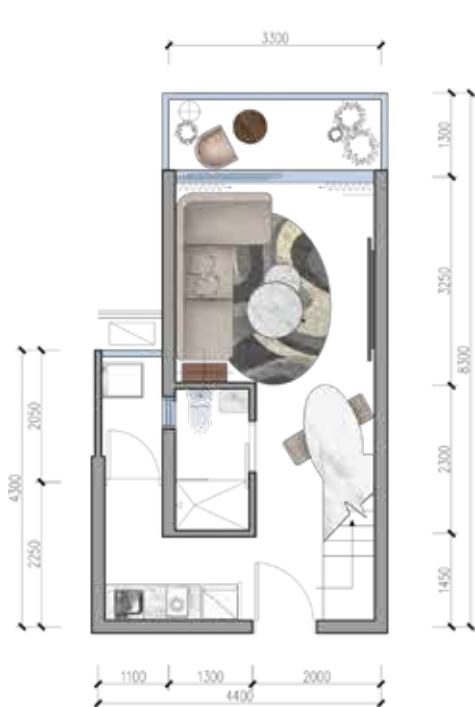
- UP TO 3 BEDROOMS • 2 BALCONIES •
- EASILY SPLIT INTO RENTABLE UNITS •
- BUSINESS/RESIDENTIAL MIX •

PHASE 2 SITE PLAN



BLOCK E

LOWER FLOOR



UPPER FLOOR



TOTAL GROSS AREA: ~84 SQM

TOTAL NET AREA: ~71 SQM

Disclaimer:

These renderings are just for design suggestion, it does not represent the actual handover standard.

GET TO KNOW MORE ABOUT US

Urban Village Phnom Penh

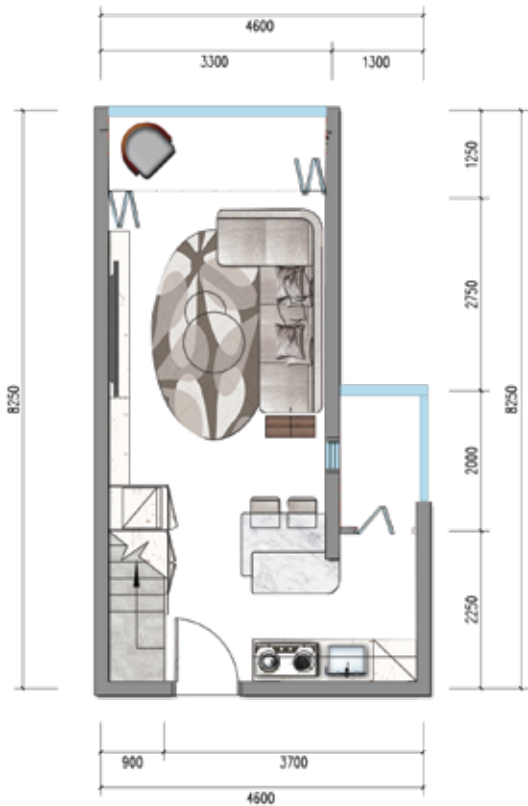
live@villagephnompenh.com

National Road 2 | Chak Angre Leu | Phnom Penh

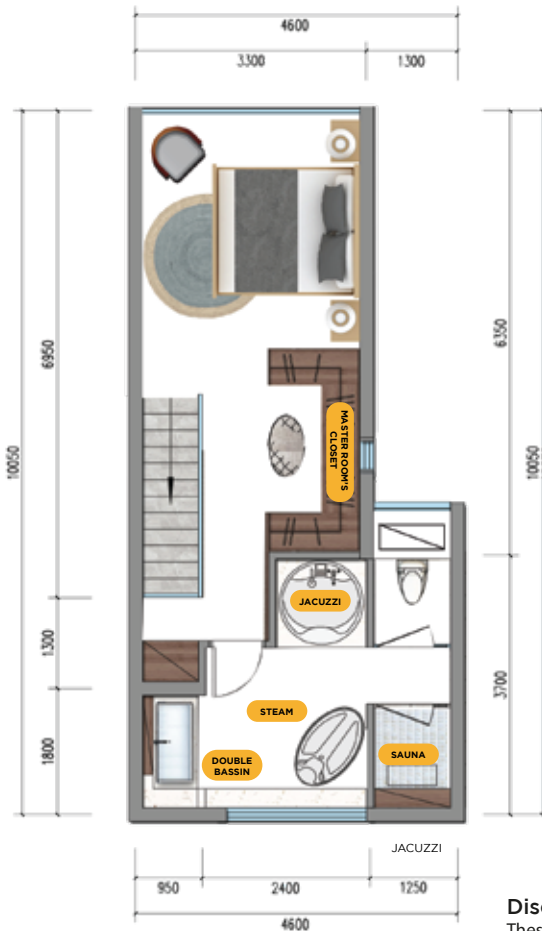


URBAN VILLAGE

LOWER FLOOR



UPPER FLOOR

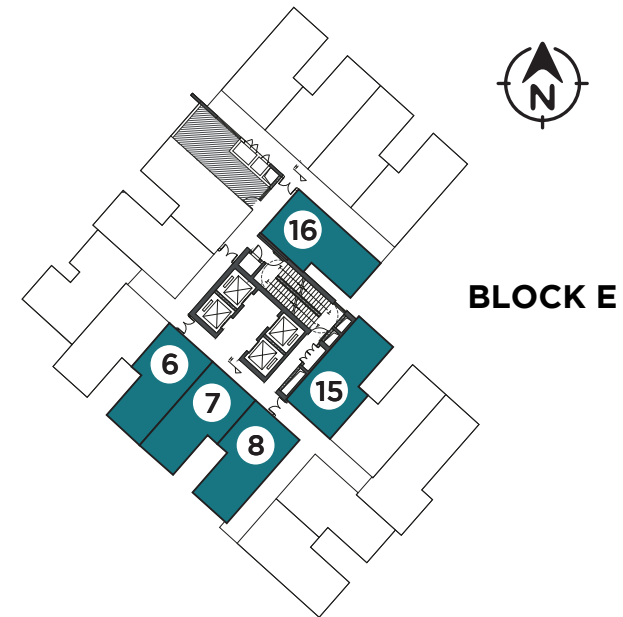


Royale DELUXE SUITE

UP TO 2 BEDROOMS, 2 BATHROOMS,
2 BALCONIES, EASILY SPLIT INTO RENTABLE UNITS
BUSINESS/RESIDENTIAL MIX

LUXURY AMENITIES OPTION

JACUZZI, STEAM, SAUNA & PERSONAL CLOSET ROOM



PHASE 2 SITE PLAN

Disclaimer:

These renderings are just for design suggestion,
it does not represent the actual handover standard.

TOTAL GROSS AREA: ~86 SQM - 90SQM

TOTAL NET AREA: ~72 SQM - 76SQM

GET TO KNOW MORE ABOUT US

[f](#) Urban Village Phnom Penh

live@villagephnompenh.com

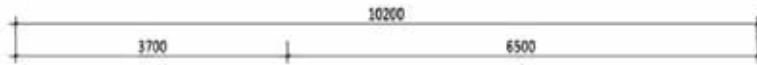
[📍](#) National Road 2 | Chak Angre Leu | Phnom Penh



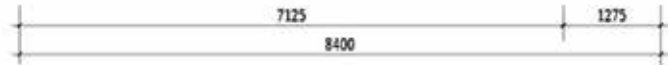
URBAN VILLAGE

Royale DELUXE SUITE

UP TO 2 BEDROOMS, 2 BATHROOMS,
2 BALCONIES, EASILY SPLIT INTO RENTABLE UNITS
BUSINESS/RESIDENTIAL MIX

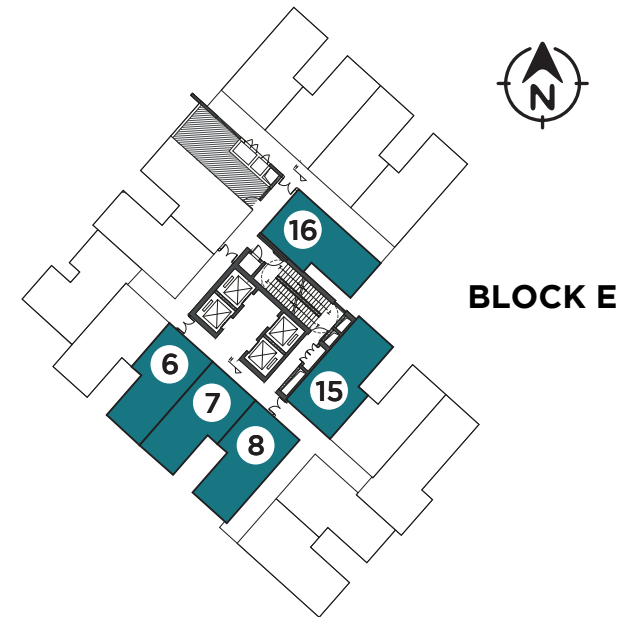


5.4m



LUXURY AMENITIES OPTION

JACUZZI, STEAM, SAUNA & PERSONAL CLOSET ROOM



PHASE 2 SITE PLAN

JACUZZI

SAUNA

STEAM

CLOSET ROOM



Disclaimer:

These renderings are just for design suggestion,
it does not represent the actual handover standard.

TOTAL GROSS AREA: ~86 SQM - 90SQM

TOTAL NET AREA: ~72 SQM - 76SQM

GET TO KNOW MORE ABOUT US

Urban Village Phnom Penh

live@villagephnompenh.com

National Road 2 | Chak Angre Leu | Phnom Penh



BUILDING H



TYPE H/A3 | 3 BEDROOMS

84 SQM TOTAL NET AREA 108 SQM TOTAL GROSS AREA

TYPE H/A4 | 3 BEDROOMS

81 SQM TOTAL NET AREA 105 SQM TOTAL GROSS AREA

TYPE H/B4 | 2 BEDROOMS

61 SQM TOTAL NET AREA 78 SQM TOTAL GROSS AREA

TYPE H/B10 | 2 BEDROOMS

58 SQM TOTAL NET AREA 73 SQM TOTAL GROSS AREA

TYPE H/C6 | 1 BEDROOM

42 SQM TOTAL NET AREA 54 SQM TOTAL GROSS AREA

TYPE H/C8 | 1 BEDROOM

44 SQM TOTAL NET AREA 56 SQM TOTAL GROSS AREA

TYPE H/D1 | STUDIO

29 SQM TOTAL NET AREA 37 SQM TOTAL GROSS AREA

TYPE H/D2 | STUDIO

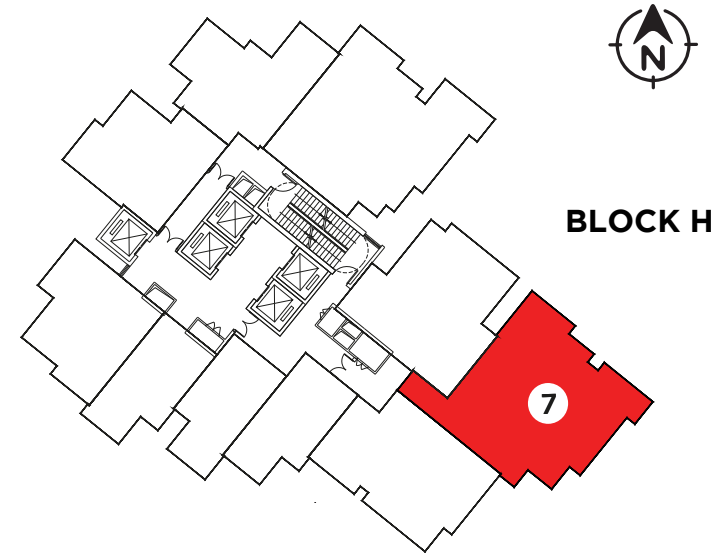
29 SQM TOTAL NET AREA 37 SQM TOTAL GROSS AREA

NAGA WORLD
DIAMOND ISLAND



URBAN VILLAGE TYPE H/A3

3 BEDROOMS | 2 BATHROOMS | 2 BALCONIES | 1 KITCHEN



PHASE 2 SITE PLAN

TOTAL GROSS AREA: ~108 SQM

TOTAL NET AREA: ~84 SQM

Disclaimer:

These renderings are just for design suggestion,
it does not represent the actual handover standard.

GET TO KNOW MORE ABOUT US

 [Urban Village Phnom Penh](#)

 live@villagephnompenh.com

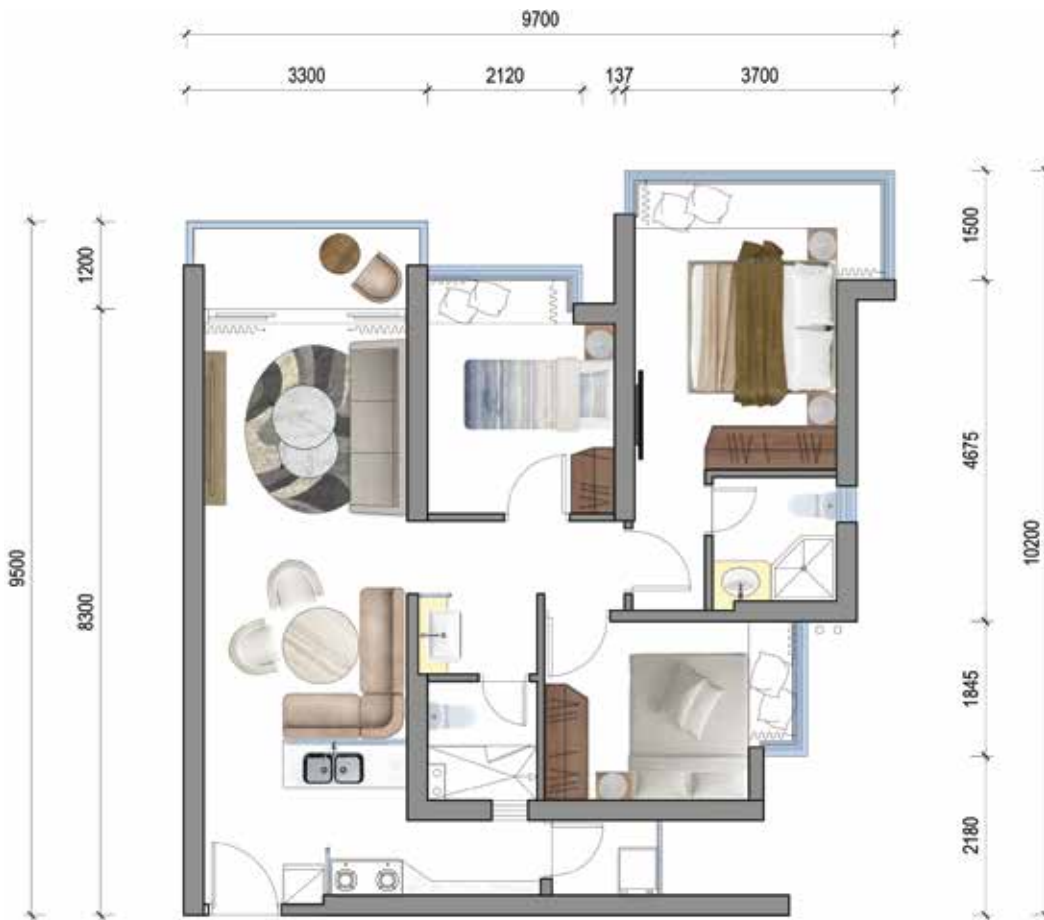
 National Road 2 | Chak Angre Leu | Phnom Penh



URBAN VILLAGE

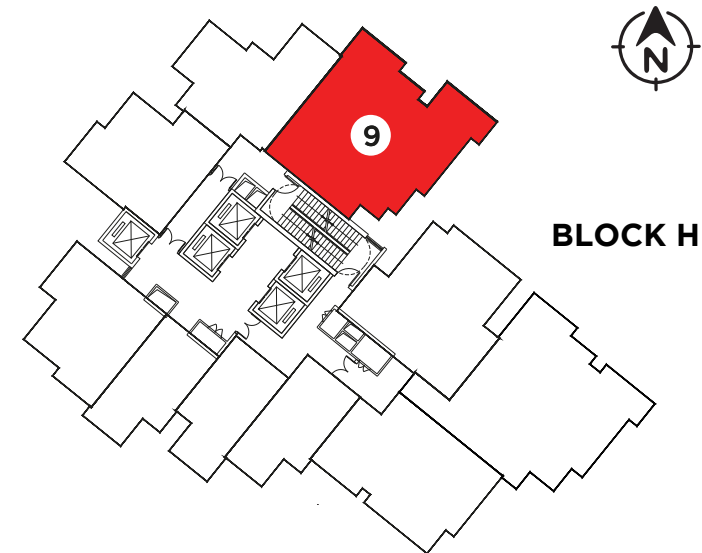
TYPE H/A4

3 BEDROOMS | 2 BATHROOMS | 2 BALCONIES | 1 KITCHEN



TOTAL GROSS AREA: ~105 SQM

TOTAL NET AREA: ~81 SQM



PHASE 2 SITE PLAN

Disclaimer:

These renderings are just for design suggestion,
it does not represent the actual handover standard.

GET TO KNOW MORE ABOUT US

 [Urban Village Phnom Penh](#)

 live@villagephnompenh.com

 National Road 2 | Chak Angre Leu | Phnom Penh



URBAN VILLAGE

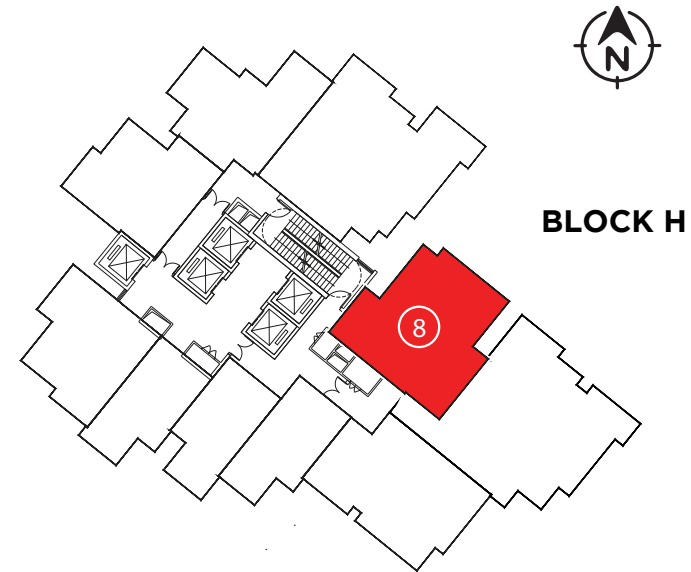
TYPE H/B4

2 BEDROOMS | 1 BATHROOM | 2 BALCONIES | 1 KITCHEN



TOTAL GROSS AREA: ~78 SQM

TOTAL NET AREA: ~61 SQM



PHASE 2 SITE PLAN

Disclaimer:

These renderings are just for design suggestion, it does not represent the actual handover standard.

GET TO KNOW MORE ABOUT US

Urban Village Phnom Penh

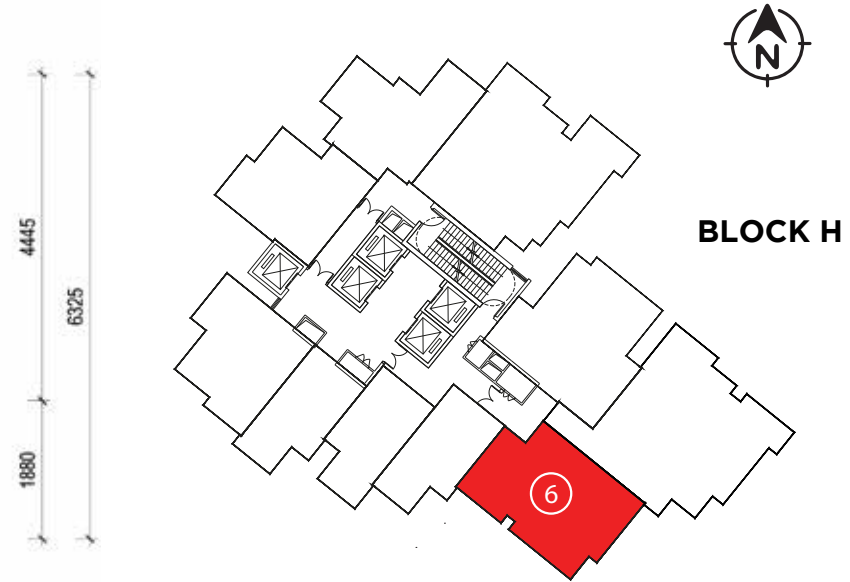
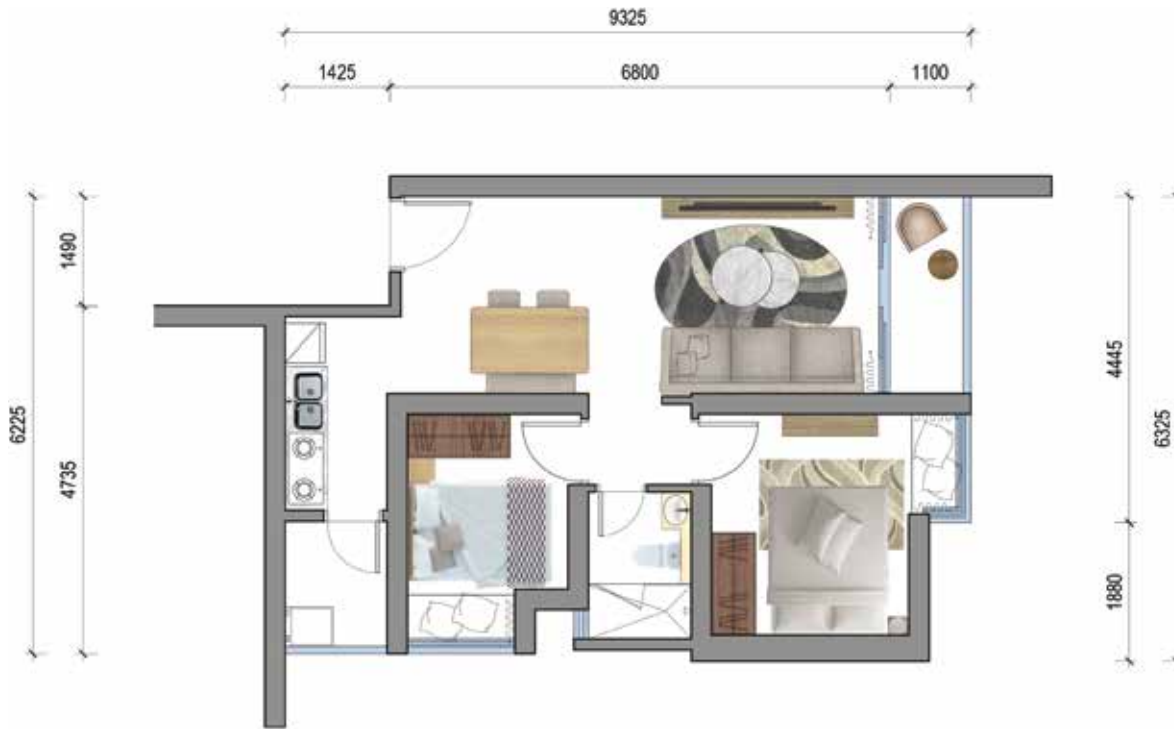
live@villagephnompenh.com

National Road 2 | Chak Angre Leu | Phnom Penh



URBAN VILLAGE TYPE H/B10

2 BEDROOMS | 1 BATHROOM | 2 BALCONIES | 1 KITCHEN



PHASE 2 SITE PLAN

TOTAL GROSS AREA: ~73 SQM

TOTAL NET AREA: ~58 SQM

Disclaimer:

These renderings are just for design suggestion, it does not represent the actual handover standard.

GET TO KNOW MORE ABOUT US

Urban Village Phnom Penh

live@villagephnompenh.com

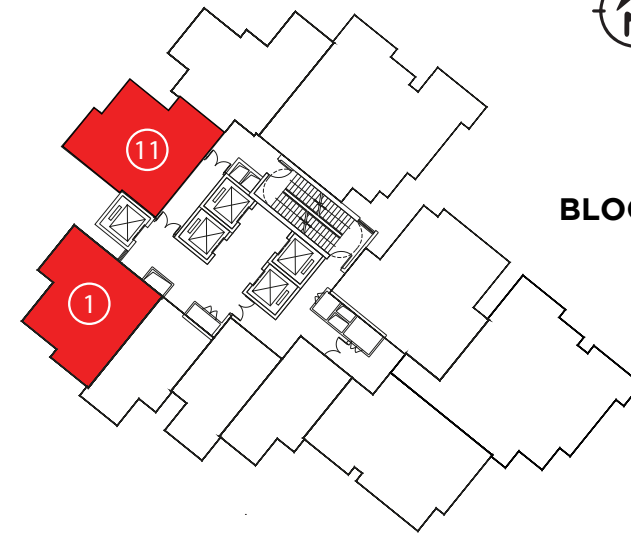
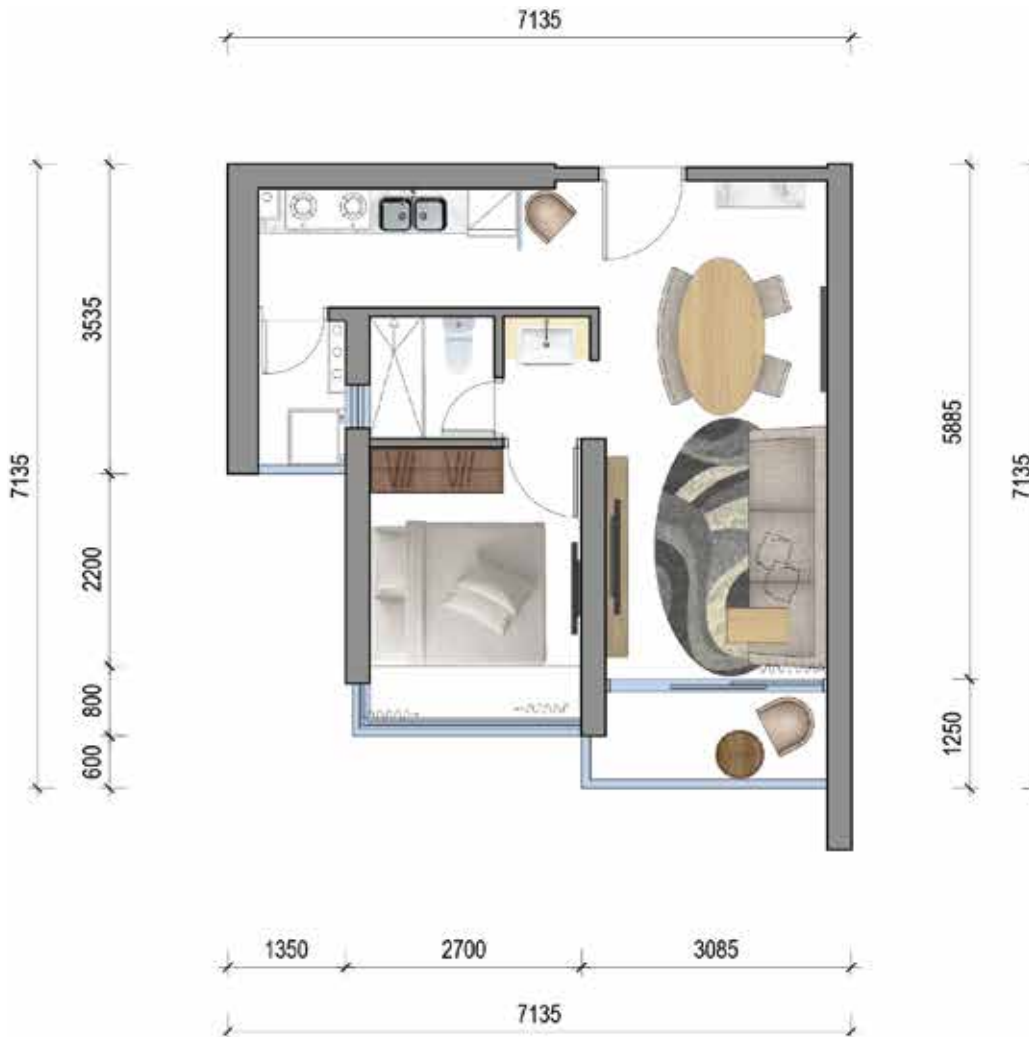
National Road 2 | Chak Angre Leu | Phnom Penh



URBAN VILLAGE

TYPE H/C6

1 BEDROOM | 1 BATHROOM | 2 BALCONIES | 1 KITCHEN



BLOCK H

PHASE 2 SITE PLAN

TOTAL GROSS AREA: ~54 SQM

TOTAL NET AREA: ~42 SQM

Disclaimer:

These renderings are just for design suggestion,
it does not represent the actual handover standard.

GET TO KNOW MORE ABOUT US

Urban Village Phnom Penh

live@villagephnompenh.com

National Road 2 | Chak Angre Leu | Phnom Penh

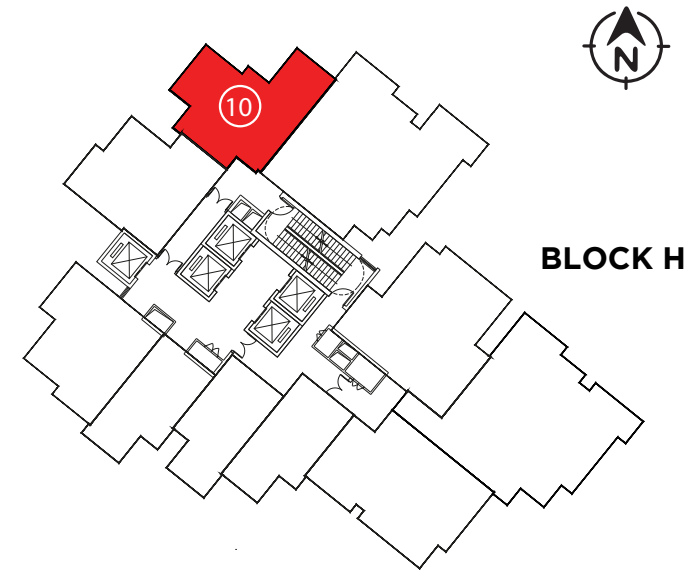


URBAN VILLAGE TYPE H/C8

1 BEDROOM | 1 BATHROOM | 2 BALCONIES | 1 KITCHEN



TOTAL GROSS AREA: ~56 SQM
TOTAL NET AREA: ~44 SQM



PHASE 2 SITE PLAN

Disclaimer:
These renderings are just for design suggestion,
it does not represent the actual handover standard.

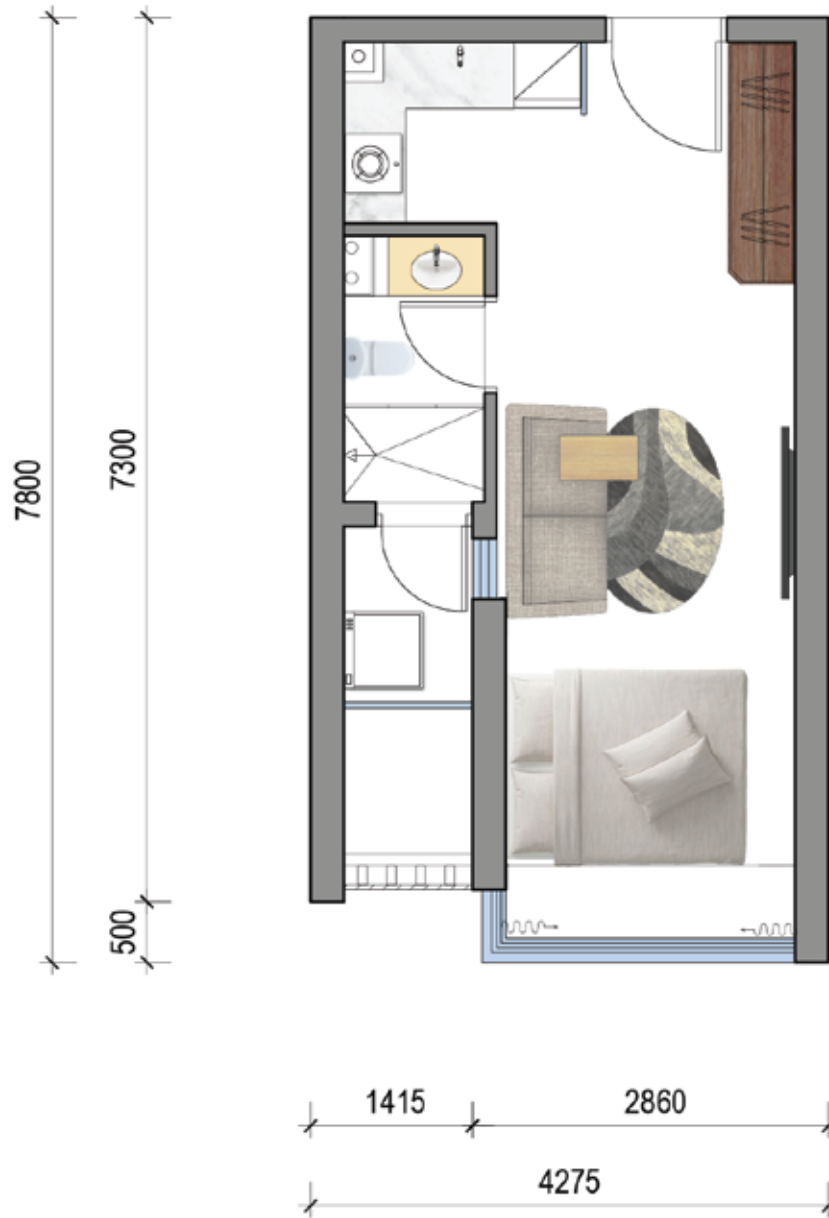
GET TO KNOW MORE ABOUT US

Urban Village Phnom Penh

live@villagephnompenh.com

National Road 2 | Chak Angre Leu | Phnom Penh





TOTAL GROSS AREA: ~37 SQM

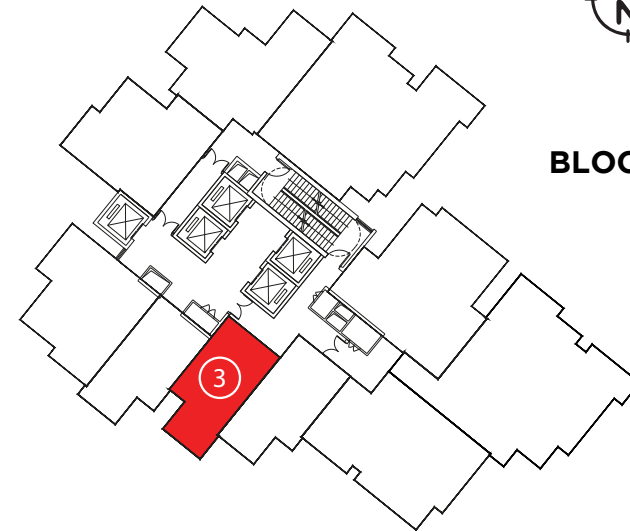
TOTAL NET AREA: ~29 SQM

URBAN VILLAGE TYPE H/D1

1 BEDROOM | 1 BATHROOM | 1 BALCONY | 1 KITCHEN



BLOCK H



PHASE 2 SITE PLAN

Disclaimer:

These renderings are just for design suggestion,
it does not represent the actual handover standard.

GET TO KNOW MORE ABOUT US

Urban Village Phnom Penh

live@villagephnompenh.com

National Road 2 | Chak Angre Leu | Phnom Penh



URBAN VILLAGE TYPE H/D2

1 BEDROOM | 1 BATHROOM | 1 BALCONY | 1 KITCHEN



BLOCK H



PHASE 2 SITE PLAN



TOTAL GROSS AREA: ~37 SQM
TOTAL NET AREA: ~29 SQM

Disclaimer:

These renderings are just for design suggestion,
it does not represent the actual handover standard.

GET TO KNOW MORE ABOUT US

 [Urban Village Phnom Penh](#)

 live@villagephnompenh.com

 National Road 2 | Chak Angre Leu | Phnom Penh

